

An 88-Square Roof? Not a Problem for Blue Glass, LLC, with the Help of EagleView Reports

"This report saved us time, but more importantly, it keeps us off the roof until we actually need to be on the roof and can install fall protection"

*- Ronny Roseveare,
Owner of Blue Glass, LLC*



When Ronny Roseveare, Owner and Managing Member of Blue Glass, LLC, began using EagleView reports, it didn't take long to see their value.

Blue Glass, LLC, has been in the roofing and remodeling business for around 15 years. Roseveare also owns Slator, LLC, which designs, makes, tests, markets, and sells innovative roofing tools, anchors, and Petzl gear. These products, which are available through vendors like GAF, also help the Blue Glass, LLC, team solve problems that they discover during their own daily roofing work.

With just six people in the company, Blue Glass, LLC, has to be efficient in its operations. Staff members can only be in one place at a time for estimates and roofing work.

While a larger crew might complete one roofing job per day, Roseveare's team of six often requires

more time to wrap things up. That means closing up the job site each day to ensure that homeowners are protected while the project is in progress.

"With a small crew, and the weather being predictably unpredictable, you like to take those projects in chunks that you can zip up at any given time," Roseveare said.

One of the biggest challenges for roofers has to do with safety during the bidding stage. During a preliminary bid, Roseveare and his crew can't install fall protection gear onto the roof surface.

"Safety is always our concern," Roseveare said. "It's nice for everybody to have the same plan before you get to the jobsite."

When his team began work on an 88-square roof with 197 different roof surfaces, Roseveare ordered

an EagleView PremiumReport™ for the property. He had heard about EagleView at a GAF show and had decided it was time to give the reports a try.

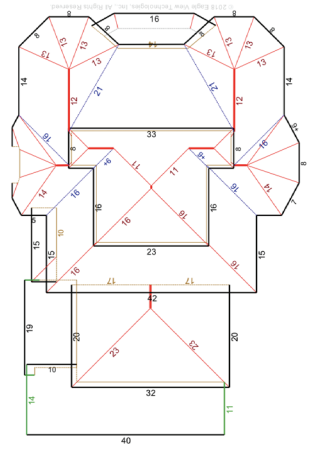
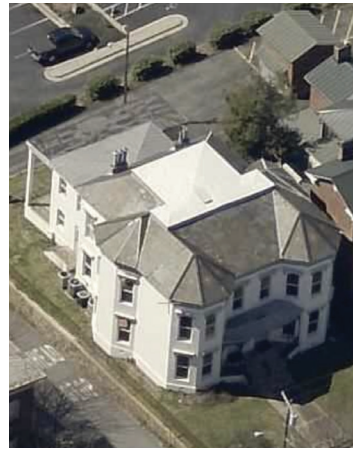
Roseveare was so impressed that he left a review on EagleView's Facebook page.

The PremiumReport, Roseveare said, "Saved us hours and hours of work to draw and document the repair/maintenance plan for this slate roof." He continued, "Very professional. Best \$75 we've spent this year."

Best of all, Roseveare's team received all the information they needed before the job could begin. "I didn't have to walk around and take pictures 'in an APP,'" Roseveare commented. "So easy to order from my office."

Having the information up front is the key to increasing efficiency. Roseveare explained that he had tried using a roof measurement app once, but he found the process "mindboggling." Why go through all that trouble again, he thought, when EagleView does all the work?

"The pictures are great, the services are great, and the turnaround time was good—about a day," Roseveare said. The photos included in the



EagleView reports enable the team to view hazards, like roof height, landscape features, and powerlines, before a job can begin.

When Blue Glass, LLC, got the call to replace the slate, valley, and ridges on a 135-year-old home in a local historic, Roseveare again turned to EagleView.

"This report saved us time, but more importantly, it keeps us off the roof until we actually need to be on the roof and can install fall protection," Roseveare wrote on LinkedIn.

"We are so grateful for the accurate reports EagleView provides us," Roseveare said. "Everyone benefits from accuracy."

