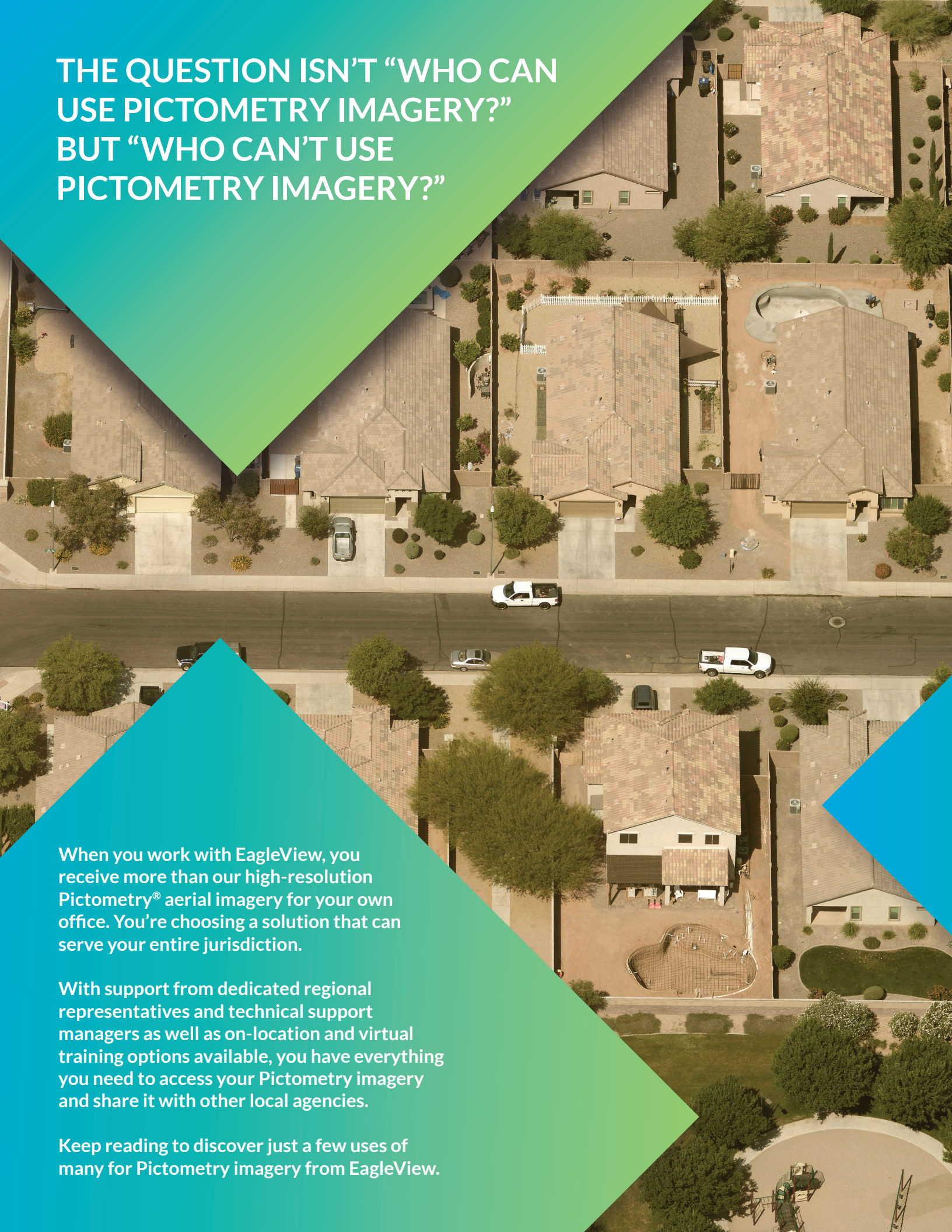


PICTOMETRY[®] IMAGERY ACROSS AGENCIES

PROMOTING USAGE
OF PICTOMETRY
IMAGERY ACROSS
YOUR JURISDICTION





THE QUESTION ISN'T "WHO CAN
USE PICTOMETRY IMAGERY?"
BUT "WHO CAN'T USE
PICTOMETRY IMAGERY?"

When you work with EagleView, you receive more than our high-resolution Pictometry® aerial imagery for your own office. You're choosing a solution that can serve your entire jurisdiction.

With support from dedicated regional representatives and technical support managers as well as on-location and virtual training options available, you have everything you need to access your Pictometry imagery and share it with other local agencies.

Keep reading to discover just a few uses of many for Pictometry imagery from EagleView.

PARCEL DATA & MAPPING



ASSESSMENT & APPRAISAL

Assessment and appraisal departments use Pictometry imagery to view property details in order to assess value in new and existing structures, which helps determine property tax rates.

With Pictometry imagery, assessors can:

- » Save time and money by reducing field inspections, especially for rural and hard-to-access properties
- » Measure area, height, length, width, distance, elevation, and more on residential, commercial, and agricultural structures
- » Obtain visual evidence of property improvements that support reassessment decisions
- » Review irrigation permit locations for changes in tillable and untillable land
- » Determine structure types

With the additional ChangeFinder™ datasets, they can see property changes over the years, including new construction, additions, and demolitions.

“Pictometry imagery gets used daily in our office due to lack of staff and the protest period we’re in. A picture is priceless when [residents] tell us that there’s vacant land and we can clearly see that there are three to four structures on it.”

Jodi Amato, Assessor
Las Animas County, Colorado



GEOGRAPHIC INFORMATION SYSTEMS (GIS)

GIS personnel, whether on their own or in another department, are charged with providing location and mapping data layers for other agencies in their jurisdiction. Planning, public safety, assessment, and other departments all benefit from imagery layered on top of GIS data. Larger counties may have GIS committees that promote enterprise-wide location-based services for inter-agency and resident benefits.

PUBLIC SAFETY



E9-1-1 COMMUNICATIONS

Emergency communications departments and 9-1-1 call centers can integrate Pictometry imagery into computer-aided dispatch (CAD) software. Call takers and dispatchers in public safety answering points (PSAPs) across North America rely on Pictometry imagery to:

- » Verify caller location and gather information
- » Provide first responders with traffic routes to incidents
- » Assist officers in pursuit of suspects
- » Identify housing structures on parcels to determine address point locations
- » Determine best ingress and egress routes when dispatching first responders to emergencies



LAW ENFORCEMENT

Situational awareness is one of the biggest advantages that Pictometry imagery can bring members of law enforcement.

Police and sheriff's departments use the imagery to:

- » Plan search, raid, and seizure operations
- » Identify staging and surveillance areas
- » Develop preemptive and concurrent tactical plans
- » Serve high-risk warrants

Pictometry imagery has even been used to solve missing persons cases and is often leveraged as evidence or supporting material in the courtroom.

“From search warrants to obtaining contact information for possible witnesses (or other associated persons within a case investigation), this tool has become a valuable resource. The software has also provided assistance when a victim or witness doesn't really know an address yet can 'drive there.'”

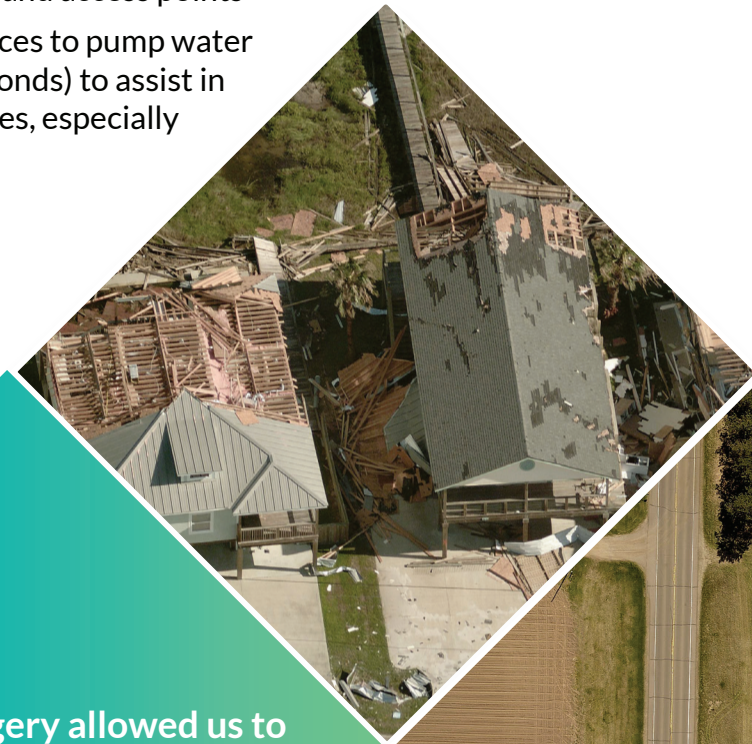
Jon Copeland, Investigator
Washington County, Oklahoma



FIRE DEPARTMENTS

Fire departments use Pictometry imagery and GIS data to:

- » Pre-plan responses
- » Locate fire hydrants
- » Control wildfires
- » Conduct drills for major structures and facilities
- » Access structural inventories, such as sprinkler systems and hazardous material lists
- » Inspect structural compositions, roof layout, and access points
- » Locate sources to pump water from (e.g., ponds) to assist in fighting fires, especially after dark



SEARCH & RESCUE TEAMS

Public safety personnel can conduct search & rescue efforts by determining distances and creating routes to missing persons in remote or hard-to-access areas.



EMERGENCY MANAGEMENT

Emergency managers use Pictometry imagery for disaster preparedness, mitigation, response, and recovery planning.



“Pictometry imagery allowed us to verify the location of [a hiker on the Appalachian trail], identify a nearby road to use for access, and identify the owner of the road. Without [it], we probably would have carried the patient out via the trail and that would have taken several hours and at least twice the number of rescuers. It allowed us to cut in half the time it took to get the patient off the mountain and to the hospital.”

Tom Bier, Battalion Chief
Roanoke, Virginia

COMMUNITY PLANNING & UTILITIES SERVICES



PLANNING & ZONING

Planning & Zoning officials use Pictometry imagery to:

- » Enforce building codes
- » Identify code violations
- » Track zoning permits
- » Establish parcel use
- » Make zoning changes
- » Re-plat properties
- » Measure structures and parcels
- » Determine driveway placement

With Pictometry imagery, Planning & Zoning personnel can review nuisance complaints and related violations without traveling to a property and facing an uncooperative property owner.

“Code enforcement uses the imagery as a comparison tool to see if different land has been a nuisance with a lot of junk or vehicles or dilapidated buildings. With imagery, we can see if it’s been cleaned up over time.”

Heidi Jerke, GIS Coordinator
Minnehaha County, South Dakota



PUBLIC WORKS

Public Works and related functions own unique funding sources like stormwater utilities, which more counties are implementing. Pictometry imagery enables these agencies to:

- » Preplan projects
- » Track manhole covers and drains
- » Analyze drainage activity
- » Determine runoff patterns
- » Map impervious surfaces to set stormwater utility tax rates
- » Remotely measure roads, bridges, and other key infrastructure
- » Gather information for grant writers and other third parties
- » Obtain funding for drain repair projects



WHO ELSE USES PICTOMETRY IMAGERY?



COUNTY ENGINEER

The County Engineer often supports departments like Public Works and Planning & Zoning. Engineers use Pictometry imagery to plan for surveys, renovations, and new construction and review properties for planning rights of way and easements.



COUNTY CLERK

County Clerks use imagery and parcel data to establish boundary lines for voting purposes.



COUNTY TREASURERS

County Treasurers can inspect foreclosed properties using imagery.



AUDITORS

Auditors can verify audit cases with imagery.



TRANSPORTATION

Transportation authorities can view neighborhoods shown in Pictometry imagery to analyze growth and traffic flow.



PARKS & RECREATION

Parks & Recreation departments can keep track of park conditions and plan for further development using aerial imagery.



ANIMAL CONTROL

Animal Control personnel can survey a property and document safety hazards before approaching it.



PROSECUTORS

Prosecutors can gather evidence in civil and criminal cases derived from objects viewable in Pictometry imagery.



HEALTH DEPARTMENTS

Health departments can conduct remote safety inspections using imagery.



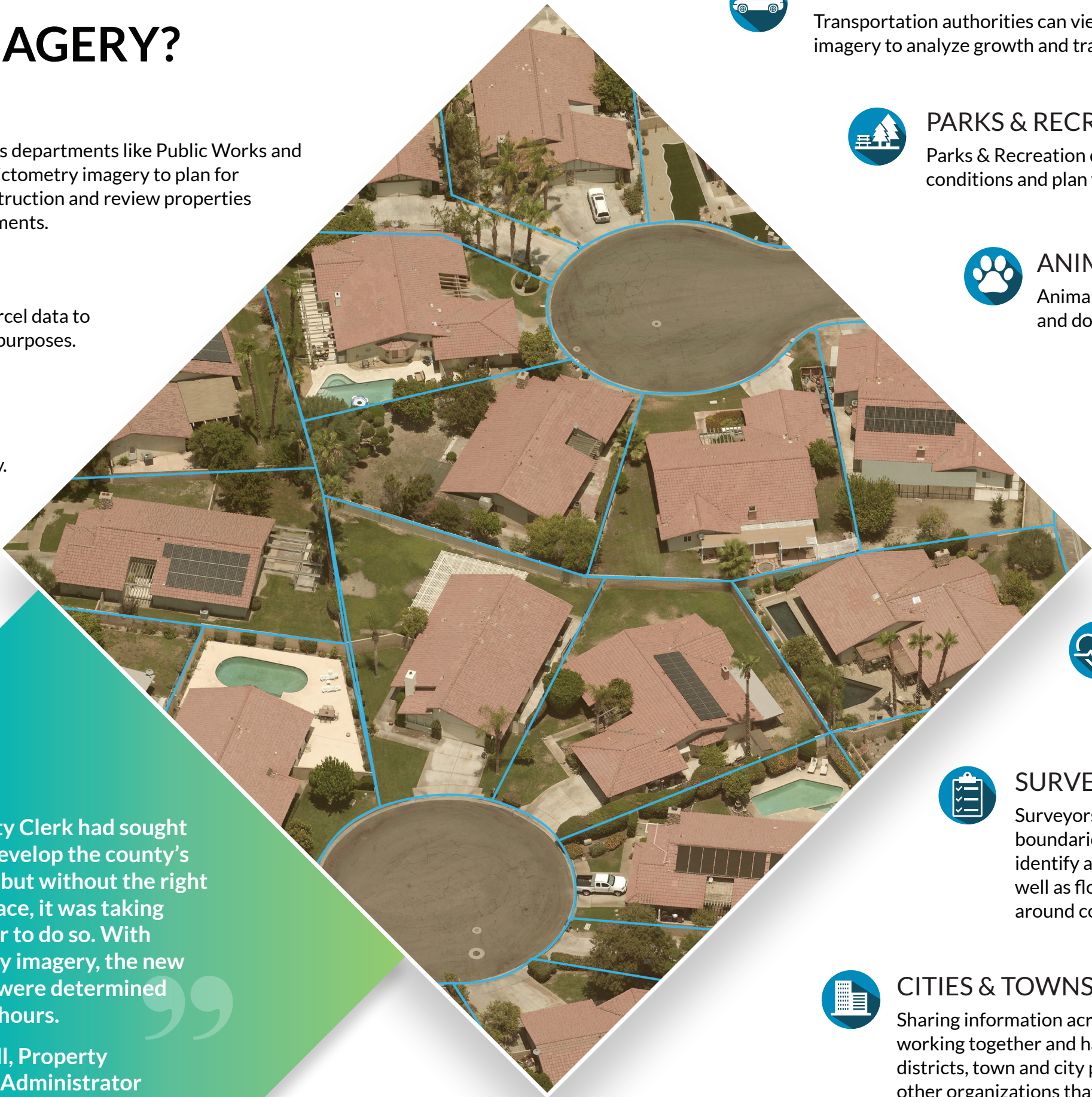
SURVEYORS

Surveyors can use imagery to determine property boundaries and review subdivision plans. They can also identify and map the location of drainage culverts, as well as flow directions. Land buffers can be measured around county drainage ditches for compliance.



CITIES & TOWNS

Sharing information across jurisdictions ensures that everyone is working together and has the same up-to-date information. School districts, town and city police departments, transit services, and other organizations that work independently or in conjunction with county authorities can benefit from Pictometry imagery.



“The County Clerk had sought out to redevelop the county’s precincts, but without the right tools in place, it was taking over a year to do so. With Pictometry imagery, the new precincts were determined within 24 hours.”

Bobby Hall, Property Valuation Administrator
Greenup County, Kentucky



HOW WILL YOU USE PICTOMETRY IMAGERY?

With greater adoption across
departments, you can diversify your
funding sources and ensure that cross-agency
communications are accurate and up-to-date.

Talk to your Pictometry imagery champion today
about seeing your jurisdiction more clearly