

In this 3D model, facets appear as semi-transparent to reveal overhangs.

Contents

Lengths 1
 Pitch 2
 Rafters 3
 Azimuth 4
 Area 5
 Penetrations 6
 Imagery 7

Property Address

1122 Main St.
Greenville, US 12345

Measurements

Area:	3,013 sq ft
Roof Facets:	9
Predominant Pitch:	23°
Number of Stories:	<=1
Ridges/Hips:	125 ft
Valleys:	44 ft
Rakes:	142 ft
Eaves:	220 ft
Penetrations:	27
Penetrations Perimeter:	104 ft
Penetrations Area:	32 sq ft

Prepared for

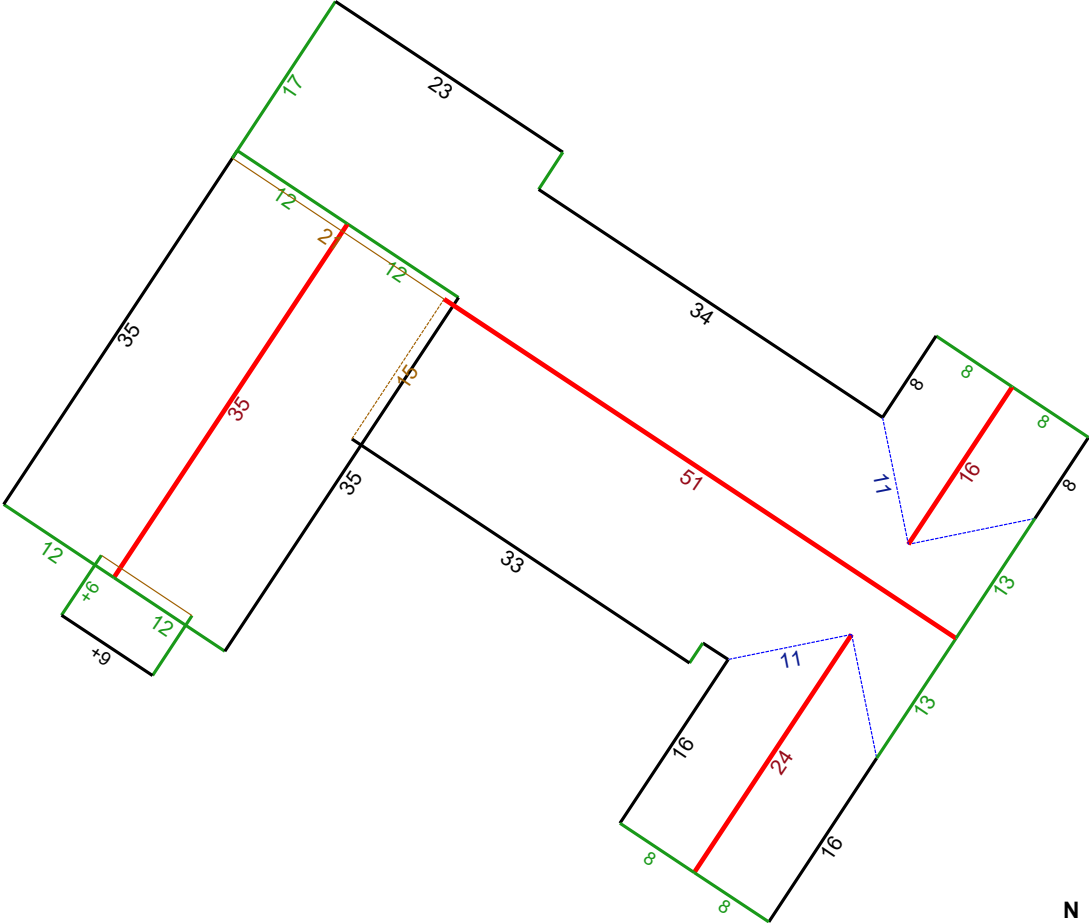
123 Main st
Main, WA 12345
5555555555

Lengths

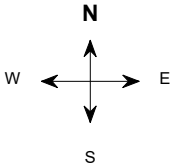
Ridges = 125 ft
 Hips = 0 ft

Valleys = 44 ft
 Rakes = 142 ft
 Eaves = 23 ft

Flashing = 35 ft
 Step flashing = 85 ft
 Parapets = 0 ft



© 2019 Eagle View Technologies, Inc., All Rights Reserved.

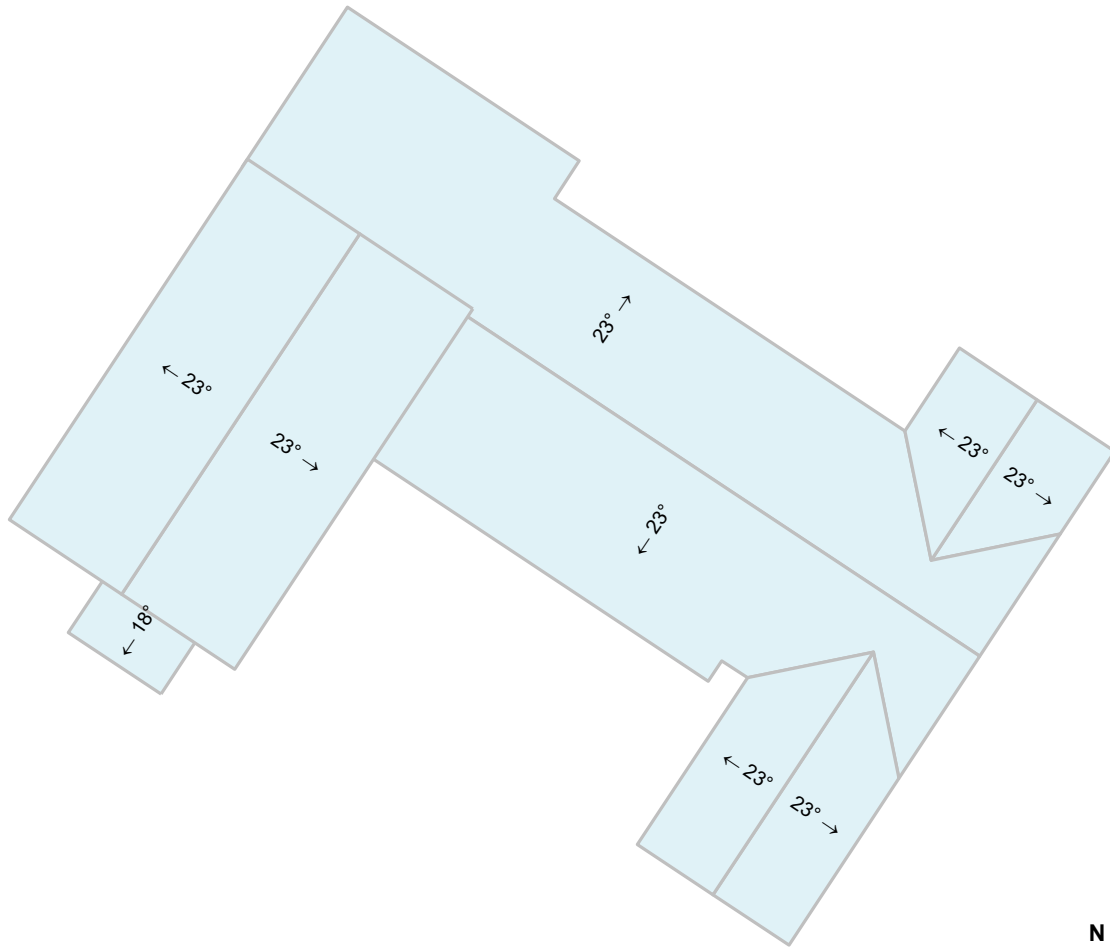


October 2, 2019
 1122 Main St.
 Greenville, US 12345
 Report: 123456789

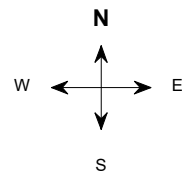


Pitch

Pitches are labeled for facet areas larger than 20 square feet. In some cases, pitch labels have been removed for readability. Flat facets are labeled 'F'.



© 2019 Eagle View Technologies, Inc., All Rights Reserved.

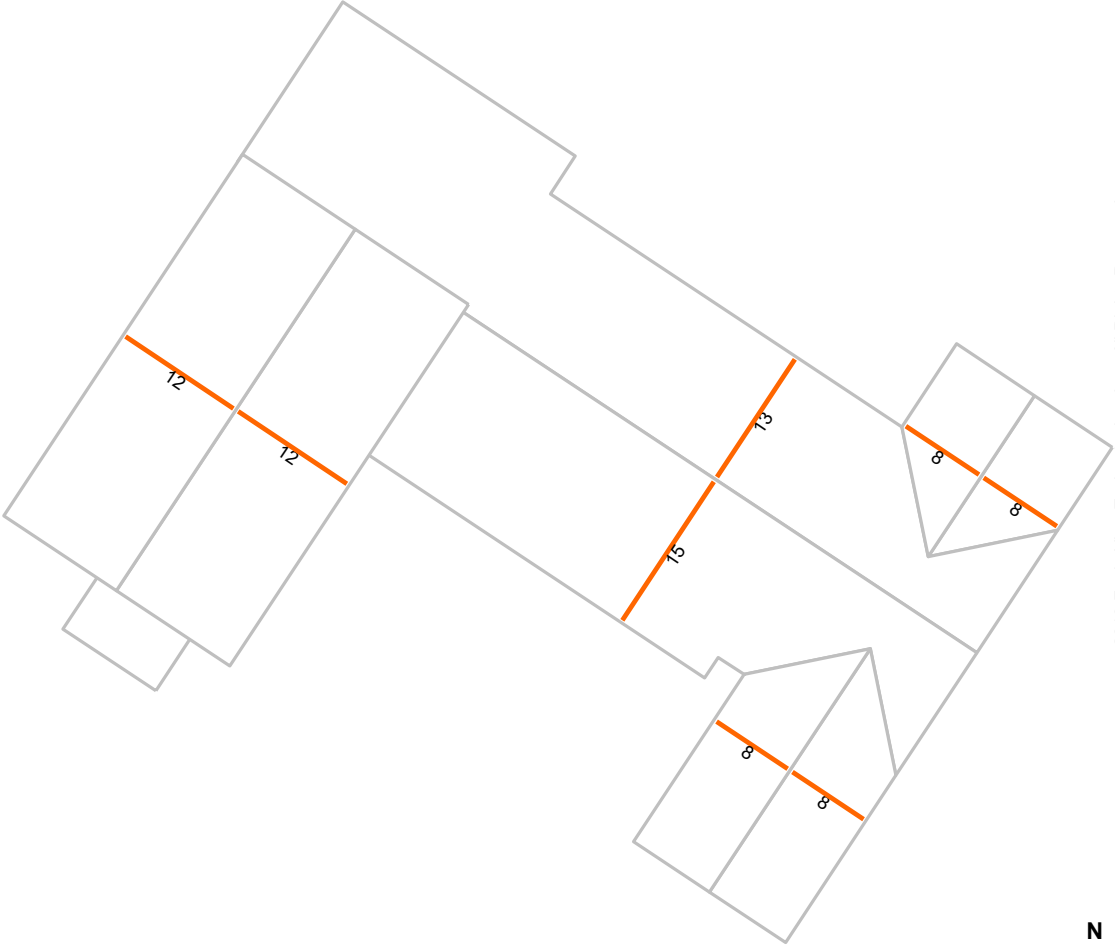


October 2, 2019
1122 Main St.
Greenville, US 12345
Report: 123456789

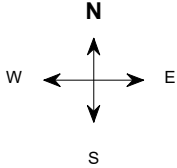


Rafters

Rafter lengths (rounded to the nearest whole number) over 5 feet. In some cases, segment labels have been removed for readability. Some numbers are prefaced by “+” signs to avoid confusion when rotated (e.g. +6 and +9).



© 2019 Eagle View Technologies, Inc., All Rights Reserved.

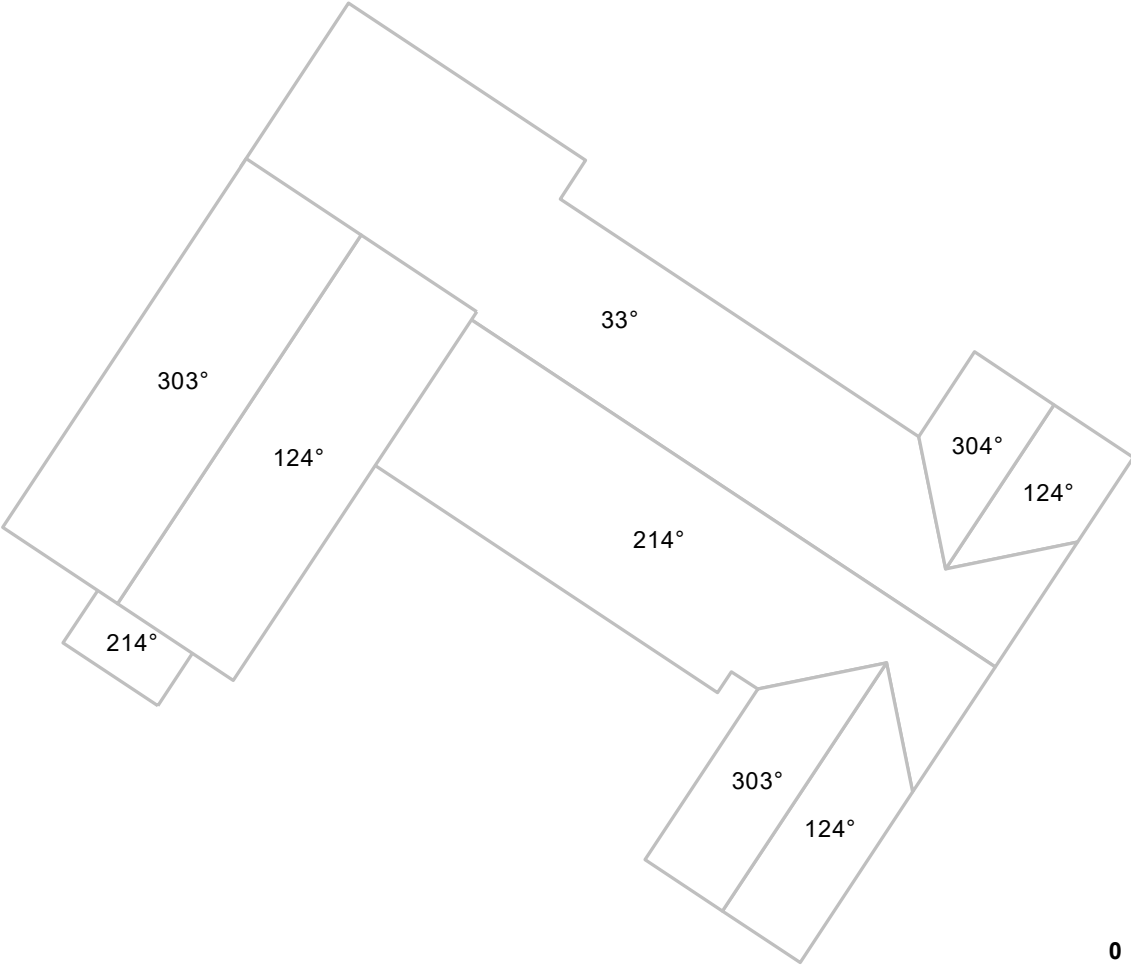


October 2, 2019
1122 Main St.
Greenville, US 12345
Report: 123456789

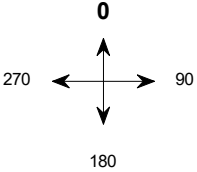


Azimuth

The azimuth is the orientation of the structure to true north. In this diagram roof facet directions are labeled in degrees, with 0° (360°) as true north. Flat facets are labeled as 'F'.



© 2019 Eagle View Technologies, Inc., All Rights Reserved.

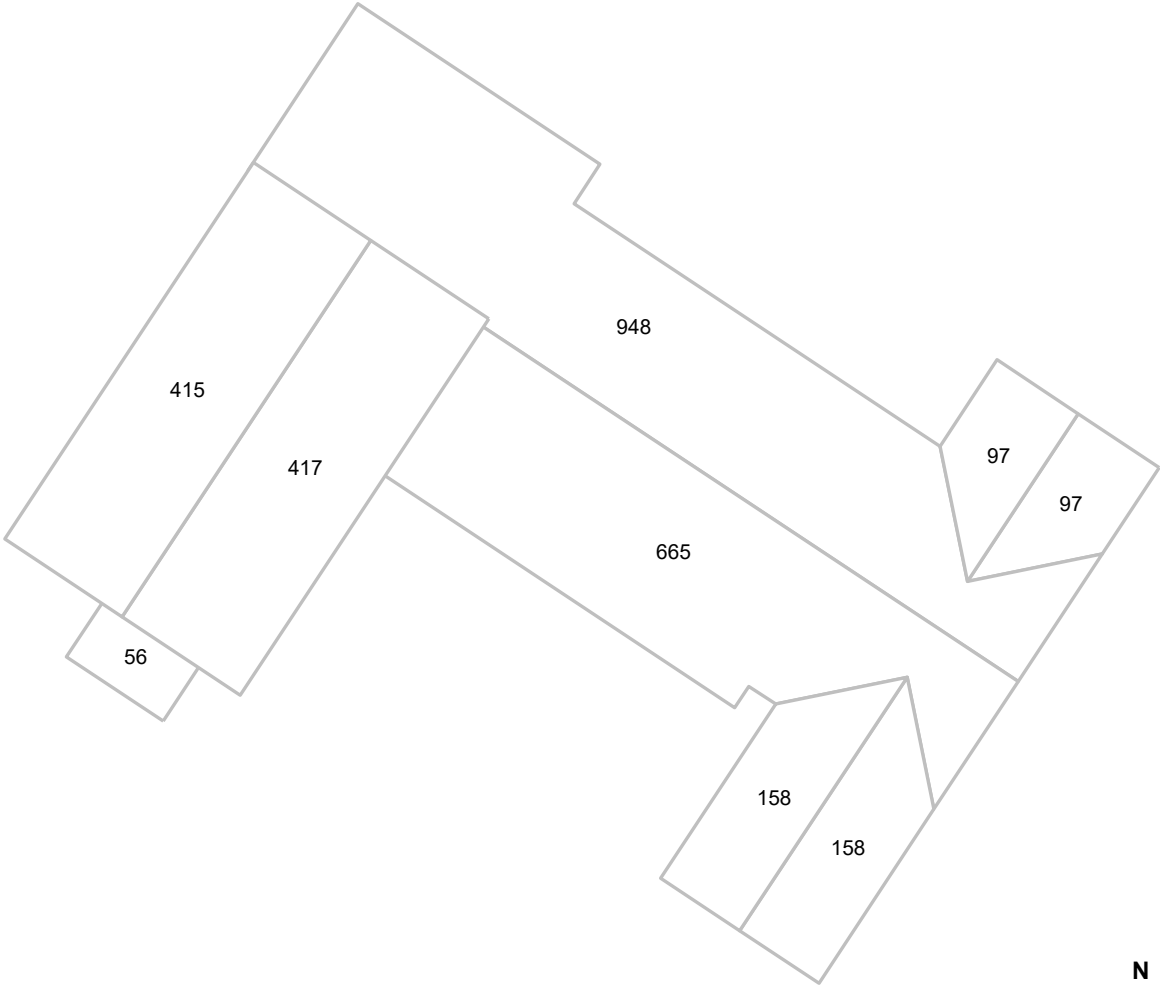


October 2, 2019
1122 Main St.
Greenville, US 12345
Report: 123456789

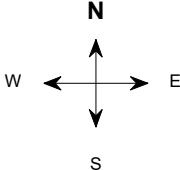


Area

The area is measured in square feet per roof facet. The values have been rounded to the nearest foot square.



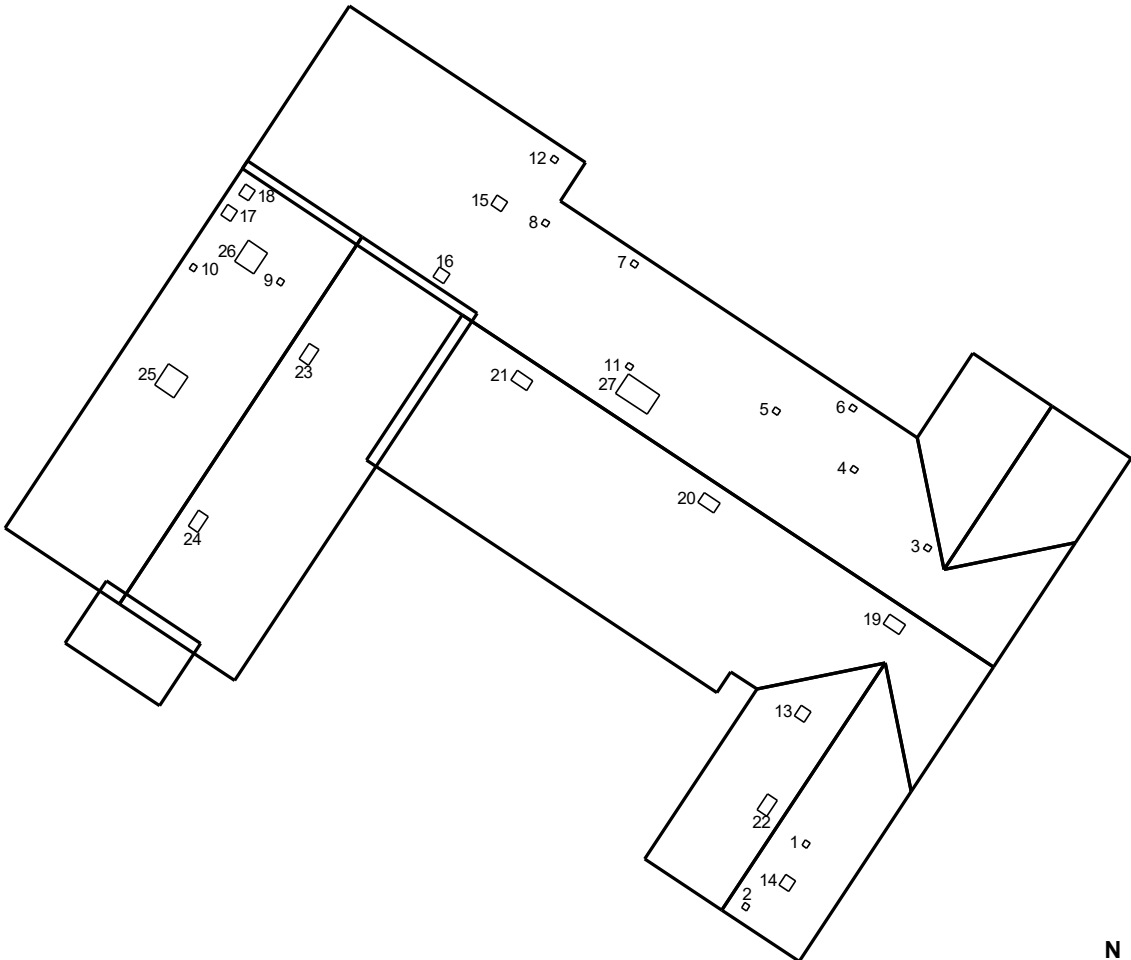
© 2019 Eagle View Technologies, Inc., All Rights Reserved.



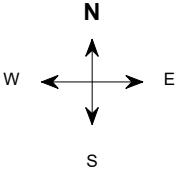
October 2, 2019
1122 Main St.
Greenville, US 12345
Report: 123456789



Penetrations



© 2019 Eagle View Technologies, Inc., All Rights Reserved.



October 2, 2019
1122 Main St.
Greenville, US 12345
Report: 123456789



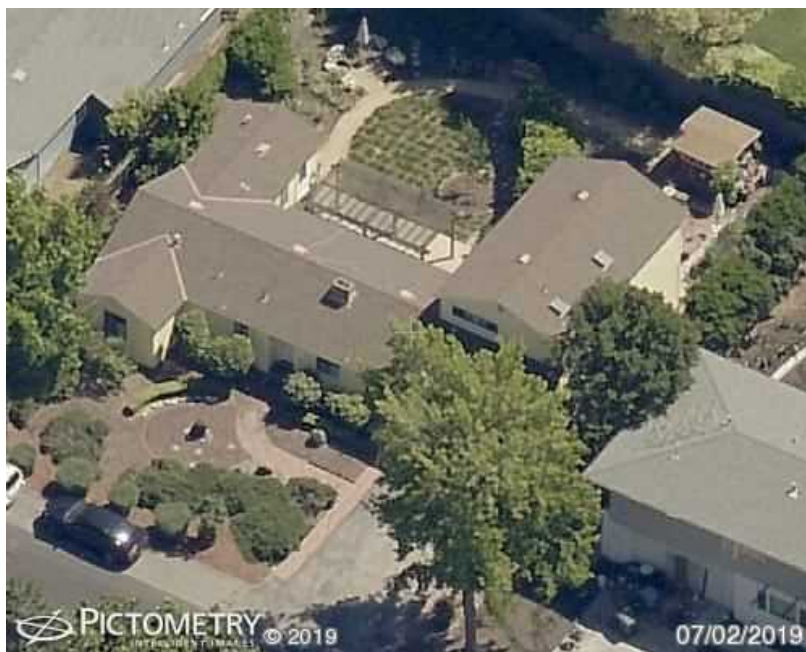
Imagery

These are images of the property taken from multiple angles.

TOP VIEW



NORTH SIDE



October 2, 2019
1122 Main St.
Greenville, US 12345
Report: 123456789



SOUTH SIDE



EAST SIDE



October 2, 2019
1122 Main St.
Greenville, US 12345
Report: 123456789



WEST SIDE



October 2, 2019
1122 Main St.
Greenville, US 12345
Report: 123456789

