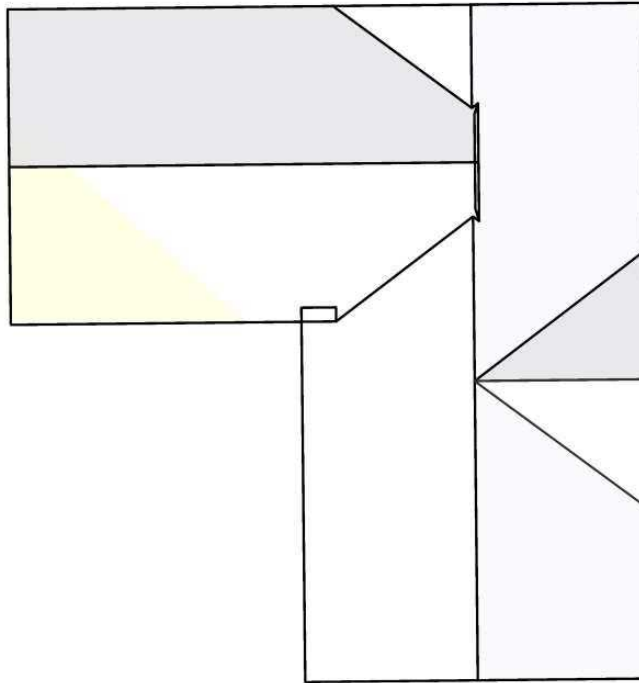


**69 Jennifer Cir, Brush, CO 80723**




In this 3D model, facets appear as semi-transparent to reveal overhangs.

| Report Details  | Roof/Wall Details  | Report Contents  |
|-----------------|--|--|
| Report:55398554 | Total Roof Area =2,394 sq ft<br>Total Roof Facets =8<br>Predominant Pitch =3/12<br>Number of Stories <=1<br>Total Ridges/Hips =102 ft<br>Total Valleys =68 ft<br>Total Rakes =119 ft<br>Total Eaves =122 ft<br>Total Wall Area = 1902.6 sq ft<br>Total Wall Facets = 7<br>Total Penetrations =20<br>Total Penetrations Perimeter = 68 ft<br>Total Penetrations Area = 16 sq ft<br>Total Siding Area = 1718.0 sq ft<br>Total Masonry Area = 184.6 sq ft | Images .....1<br>Length Diagram.....4<br>Pitch Diagram.....5<br>Area Diagram .....6<br>Notes Diagram .....7<br>Penetrations Diagram .....8<br>3D Wall Area Diagram.....9<br>Alternate 3D Wall View.....10<br>Window and Door Diagram.....11<br>Report Summary.....16<br>Wall Measurement Summary .....18 |

Contact: Brie Hearn  
 Company: Eagleview Technologies  
 Address: Address 1  
 Alabama AL 35004  
 Phone: 999-999-9999  
 Website:



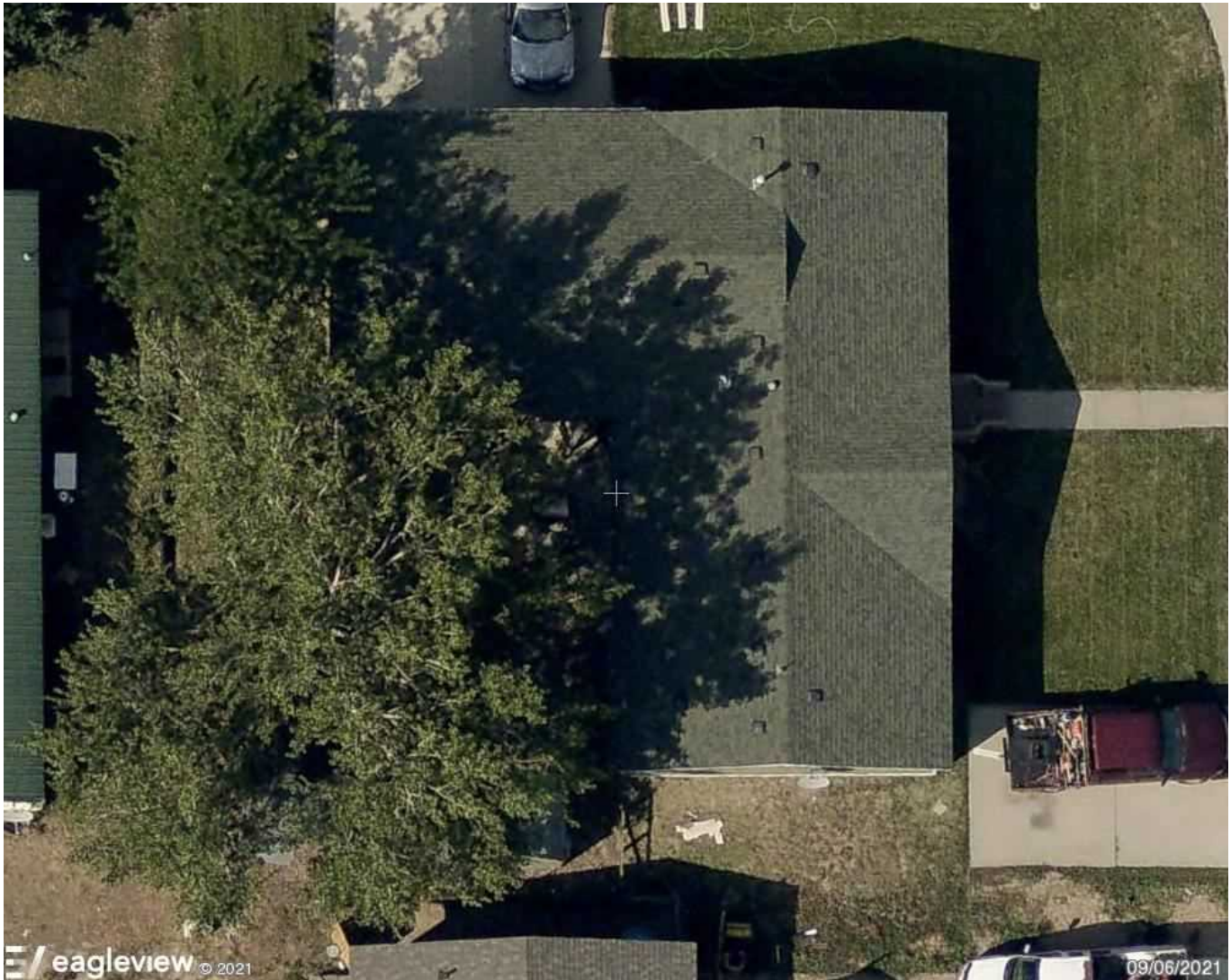


**Disclaimer:** This report was produced using EagleView Extended Coverage Technology. Due to a variety of reasons including but not limited to tree coverage, poor images, low photo resolution or other blockages, this report DOES NOT offer an accuracy guarantee. EagleView recommends that anyone using this report field verify the measurements.  
**Measurements provided by EagleView**

## Images

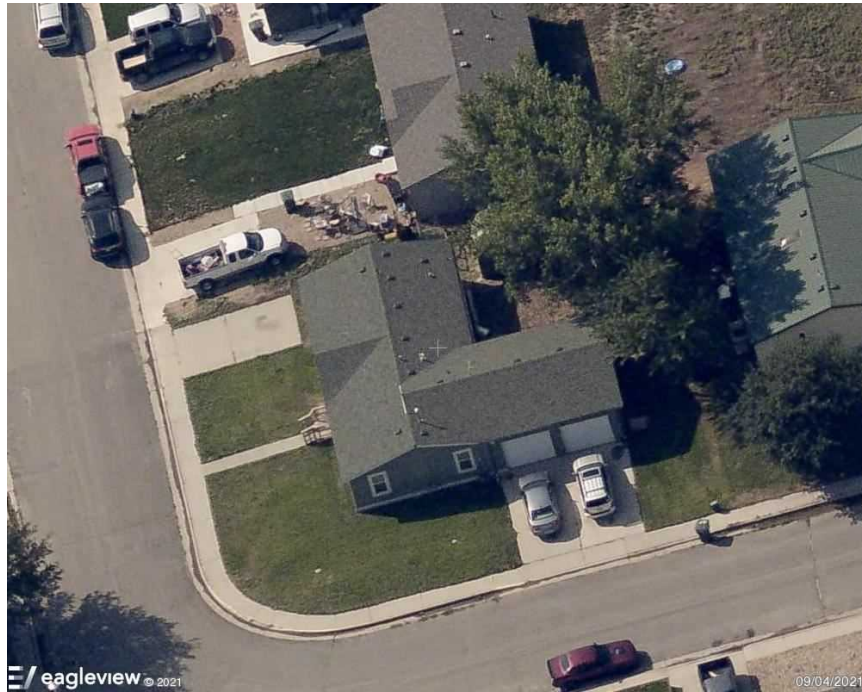
The following aerial images show different angles of this structure for your reference.

**Disclaimer:** This report was produced using EagleView Extended Coverage Technology. Due to a variety of reasons including, but not limited to: tree coverage, poor images, low photo resolution or other blockages; this report DOES NOT offer an accuracy guarantee. EagleView recommends that anyone using this report field verify the yellow-shaded sections.

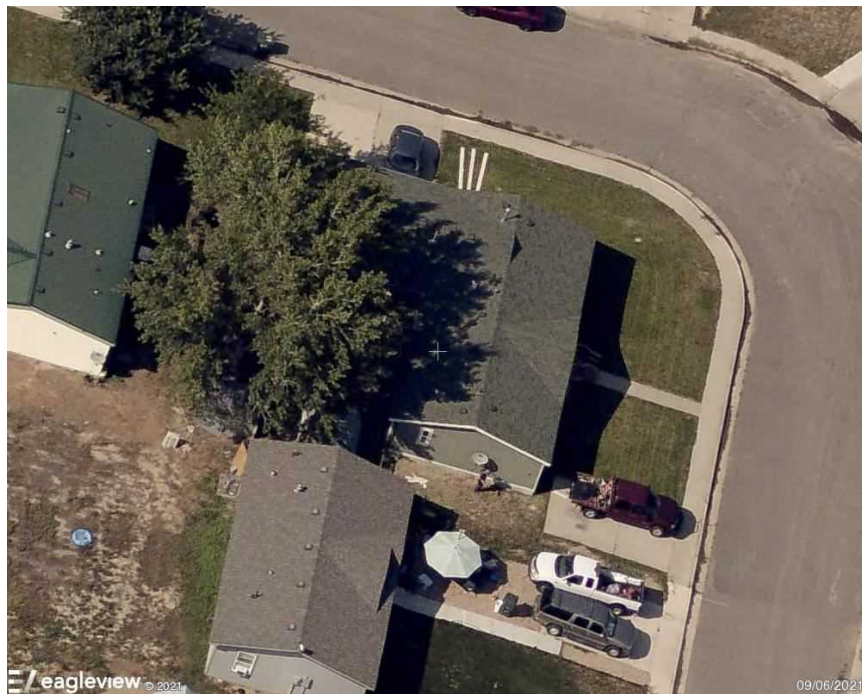


**Disclaimer:** This report was produced using EagleView Extended Coverage Technology. Due to a variety of reasons including, but not limited to: tree coverage, poor images, low photo resolution or other blockages; this report DOES NOT offer an accuracy guarantee. EagleView recommends that anyone using this report field verify the yellow-shaded sections.

North Side

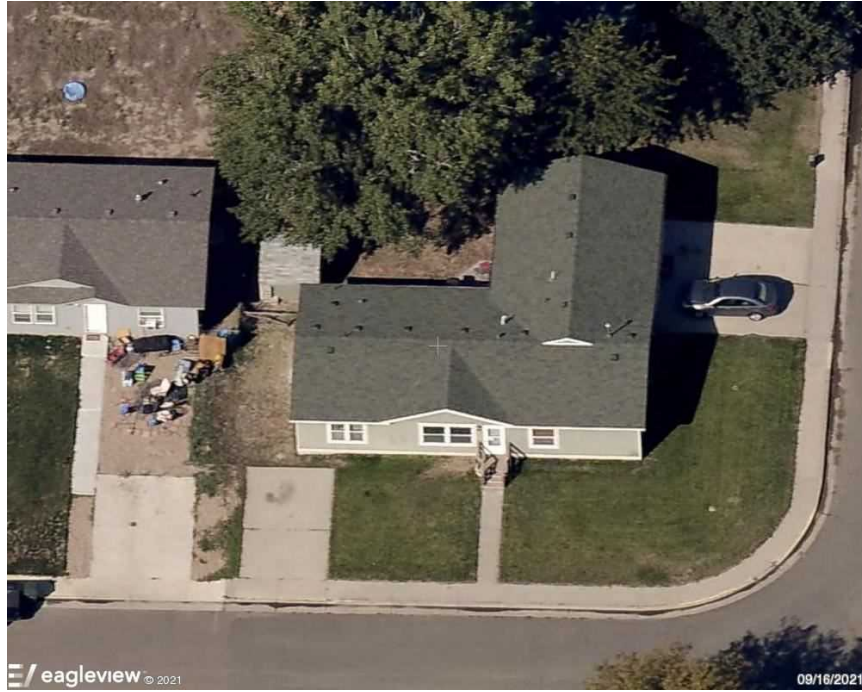


South Side

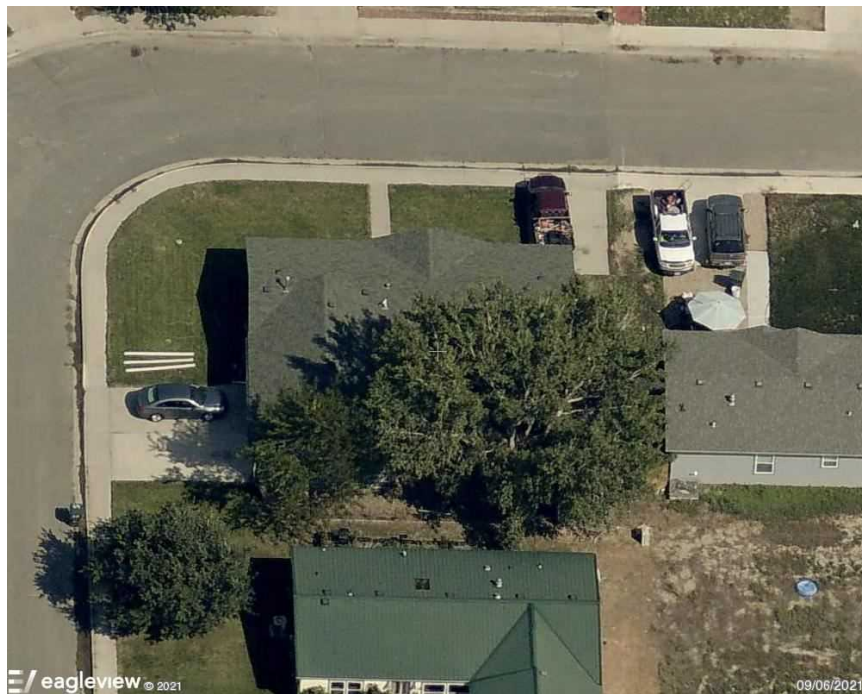


**Disclaimer:** This report was produced using EagleView Extended Coverage Technology. Due to a variety of reasons including, but not limited to: tree coverage, poor images, low photo resolution or other blockages; this report DOES NOT offer an accuracy guarantee. EagleView recommends that anyone using this report field verify the yellow-shaded sections.

East Side



West Side



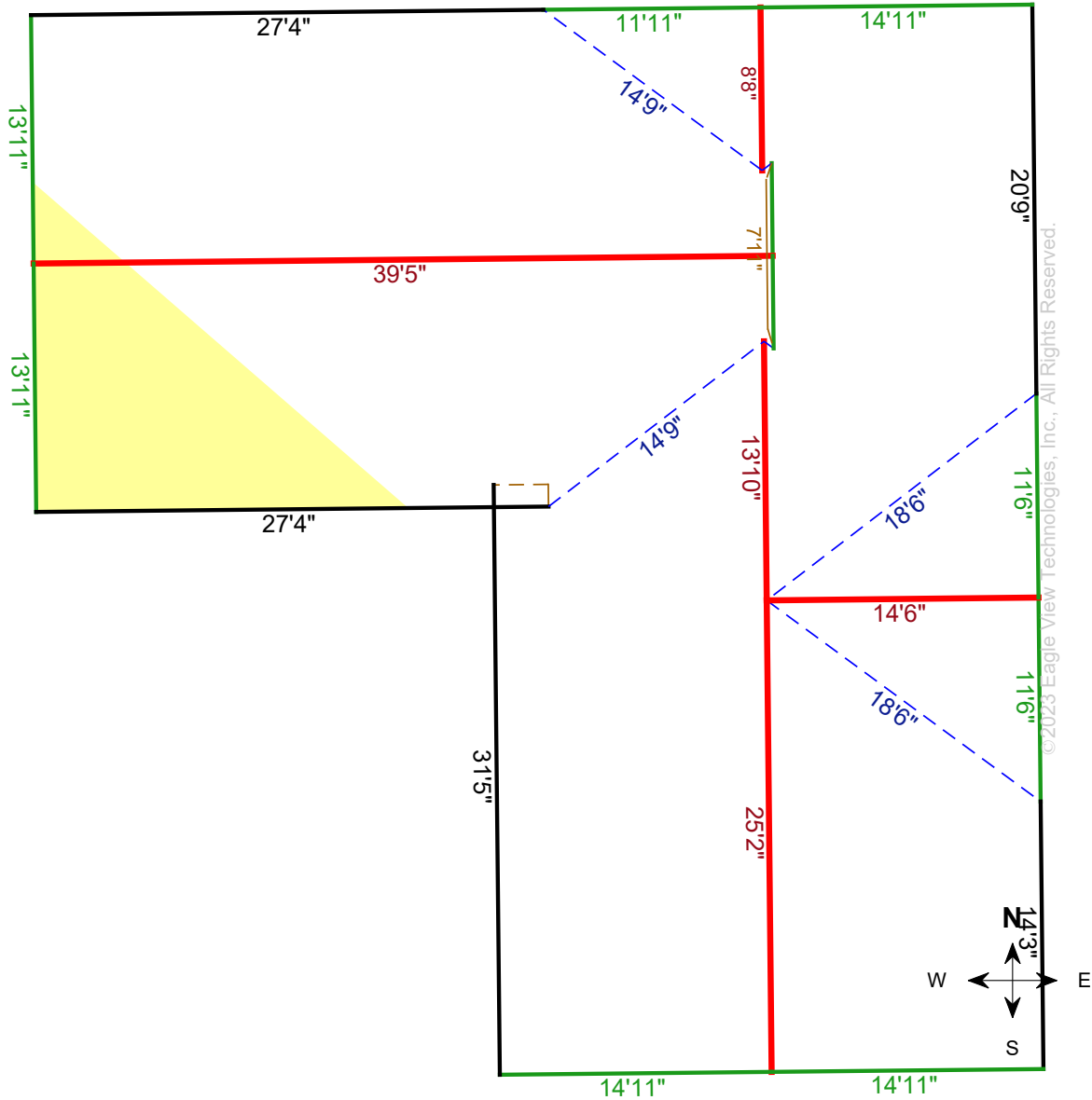
**Length Diagram**

Shaded areas should be verified

Total Line Lengths:  
**Ridges = 102 ft**  
Hips = 0 ft

Valleys = 68 ft  
Rakes = 119 ft  
Eaves = 122 ft

Flashing = 10 ft  
Step flashing = 5 ft  
Parapets = 0 ft



**Note:** This diagram contains segment lengths (rounded to the nearest whole number) over 5 feet. In some cases, segment labels have been removed for readability. Plus signs preface some numbers to avoid confusion when rotated (e.g. +6 and +9).

**Disclaimer:** This report was produced using EagleView Extended Coverage Technology. Due to a variety of reasons including, but not limited to: tree coverage, poor images, low photo resolution or other blockages; this report DOES NOT offer an accuracy guarantee. EagleView recommends that anyone using this report field verify the yellow-shaded sections.



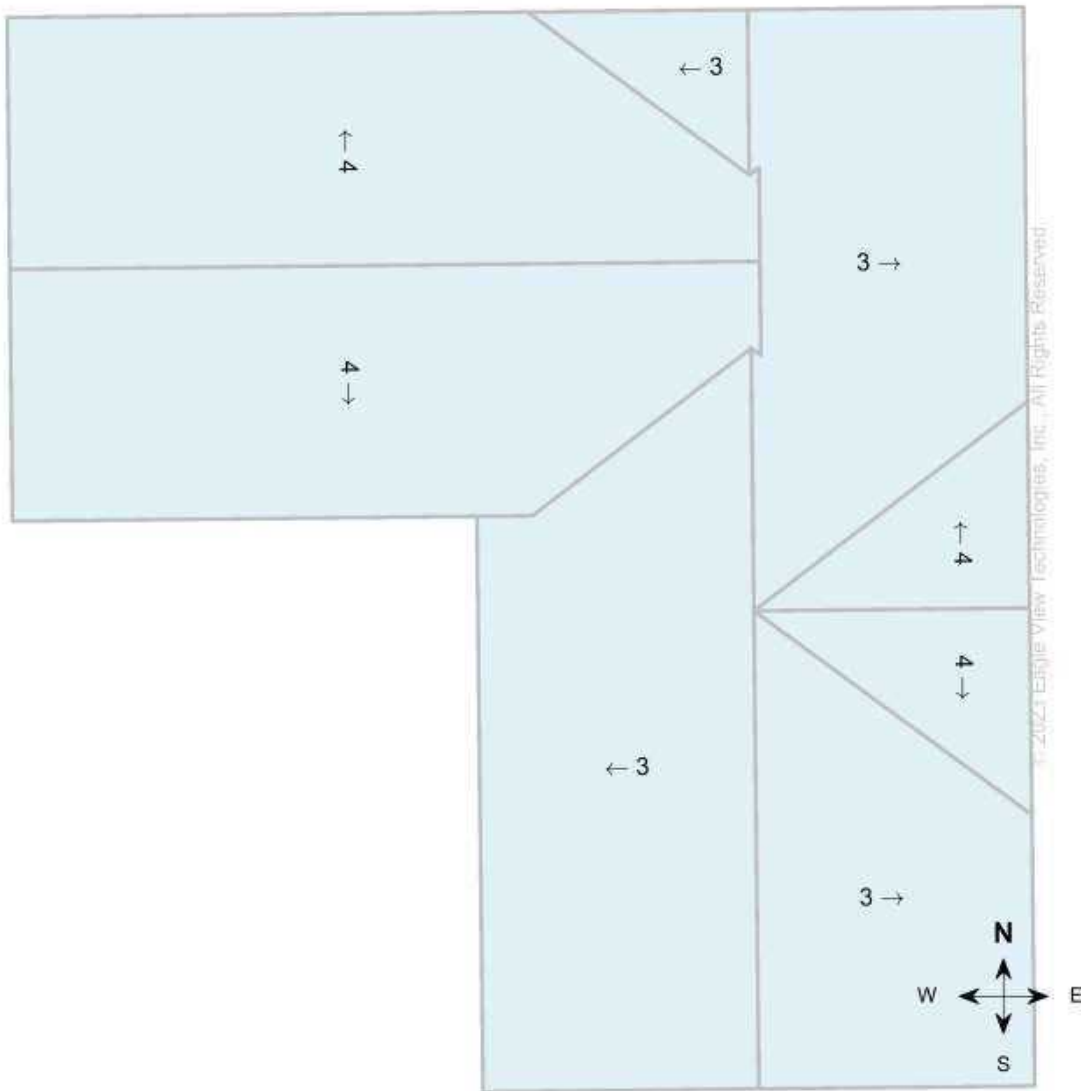
Report: 55398554

© 2008-2023 Eagle View Technologies, Inc. and Pictometry International Corp. – All Rights Reserved – Covered by one or more of U.S. Patent Nos. 8,078,436; 8,145,578; 8,170,840; 8,209,152; 8,515,125; 8,825,454; 9,135,737; 8,670,961; 9,514,568; 8,818,770; 8,542,880; 9,244,589; 9,329,749. Other Patents Pending.

## Pitch Diagram

Pitch values are shown in inches per foot and arrows indicate slope direction. The predominant pitch on this roof is 3/12.

**Disclaimer:** With Extended Coverage, only the predominant pitch may be noted due to resolution of photo. Refer to pitch table for more information.



**Note:** This diagram contains labeled pitches for facet areas larger than 20 square feet. In some cases, pitch labels have been removed for readability. Plus signs preface some numbers to avoid confusion when rotated (e.g. +6 and +9). Blue shading indicates a pitch of 3/12 and greater.

**Disclaimer:** This report was produced using EagleView Extended Coverage Technology. Due to a variety of reasons including, but not limited to: tree coverage, poor images, low photo resolution or other blockages; this report DOES NOT offer an accuracy guarantee. EagleView recommends that anyone using this report field verify the yellow-shaded sections.

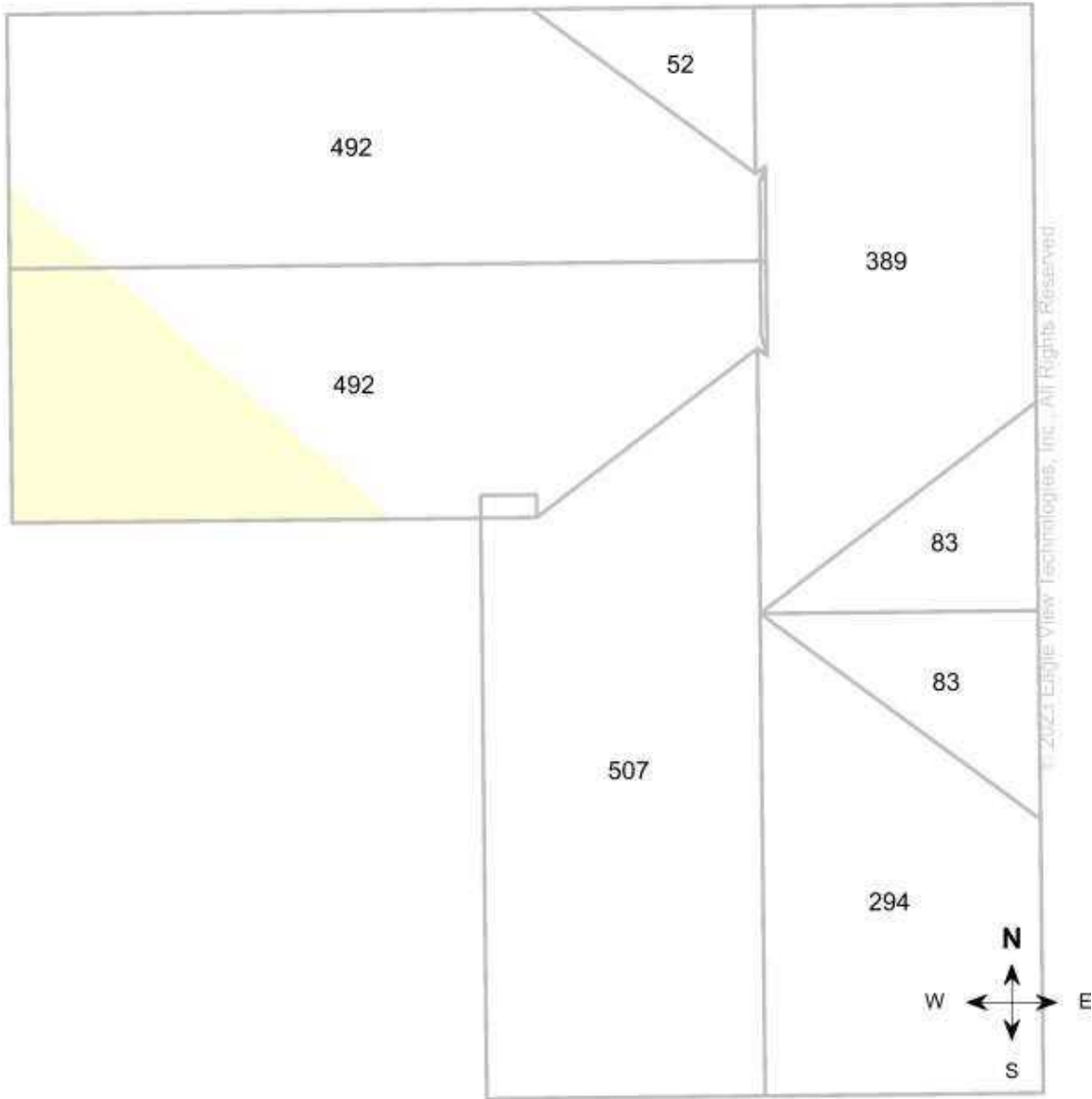


Report: 55398554

© 2008-2023 Eagle View Technologies, Inc. and Pictometry International Corp. – All Rights Reserved – Covered by one or more of U.S. Patent Nos. 8,078,436; 8,145,578; 8,170,840; 8,209,152; 8,515,125; 8,825,454; 9,135,737; 8,670,961; 9,514,568; 8,818,770; 8,542,880; 9,244,589; 9,329,749. Other Patents Pending.

### Area Diagram

Total Area = 2,394 sq ft, with 8 facets.



**Note:** This diagram shows the square feet of each roof facet (rounded to the nearest foot). The total area in square feet, at the top of this page, is based on the non-rounded values of each roof facet (rounded to the nearest square foot after being totaled).

**Disclaimer:** This report was produced using EagleView Extended Coverage Technology. Due to a variety of reasons including, but not limited to: tree coverage, poor images, low photo resolution or other blockages; this report DOES NOT offer an accuracy guarantee. EagleView recommends that anyone using this report field verify the yellow-shaded sections.

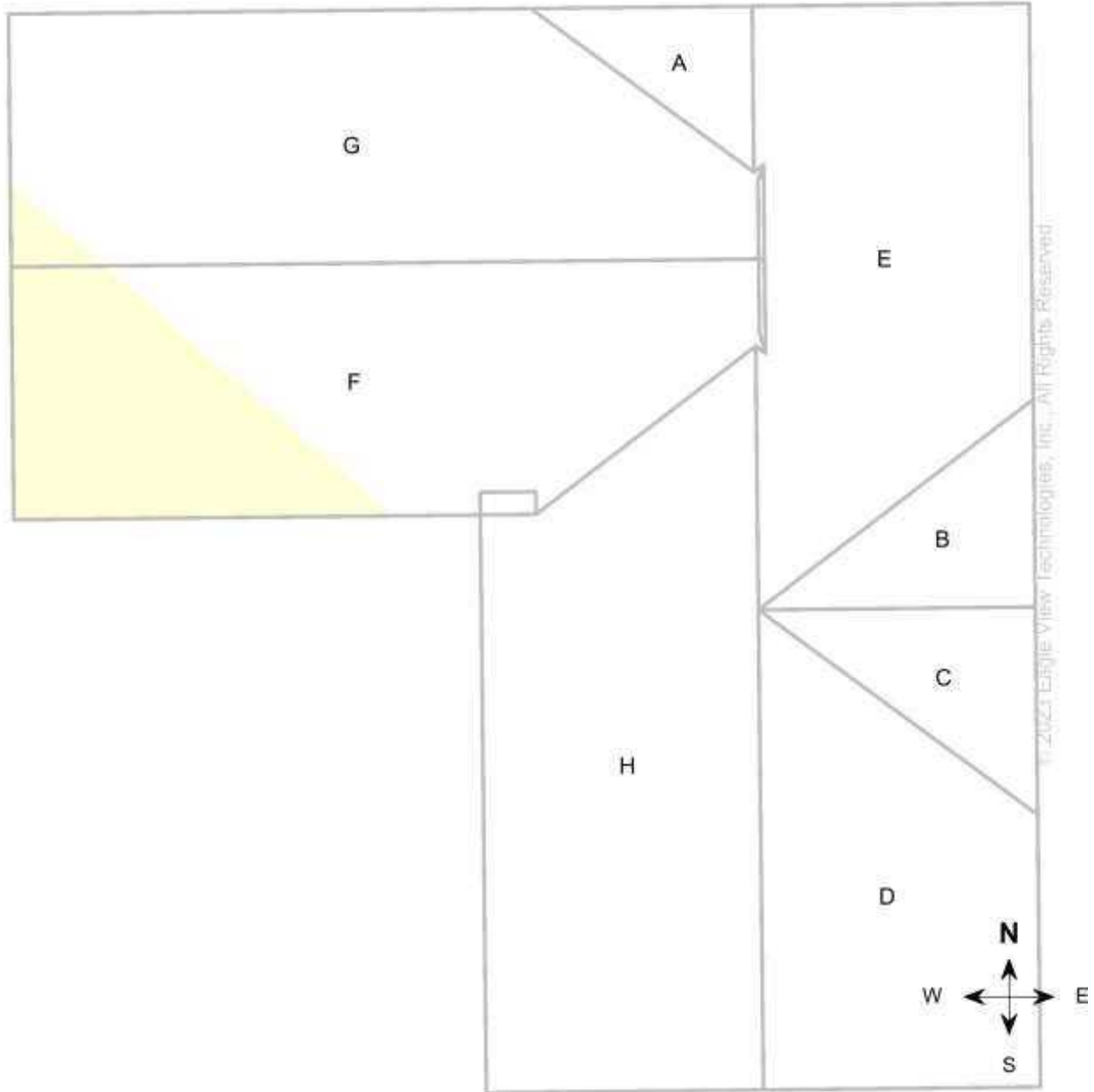


Report: 55398554

© 2008-2023 Eagle View Technologies, Inc. and Pictometry International Corp. – All Rights Reserved – Covered by one or more of U.S. Patent Nos. 8,078,436; 8,145,578; 8,170,840; 8,209,152; 8,515,125; 8,825,454; 9,135,737; 8,670,961; 9,514,568; 8,818,770; 8,542,880; 9,244,589; 9,329,749. Other Patents Pending.

### Notes Diagram

Roof facets are labeled from smallest to largest (A to Z) for easy reference.



**Note:** On-site verification of yellow shaded areas is needed. Details are on the Summary Page.



### Penetrations Notes Diagram

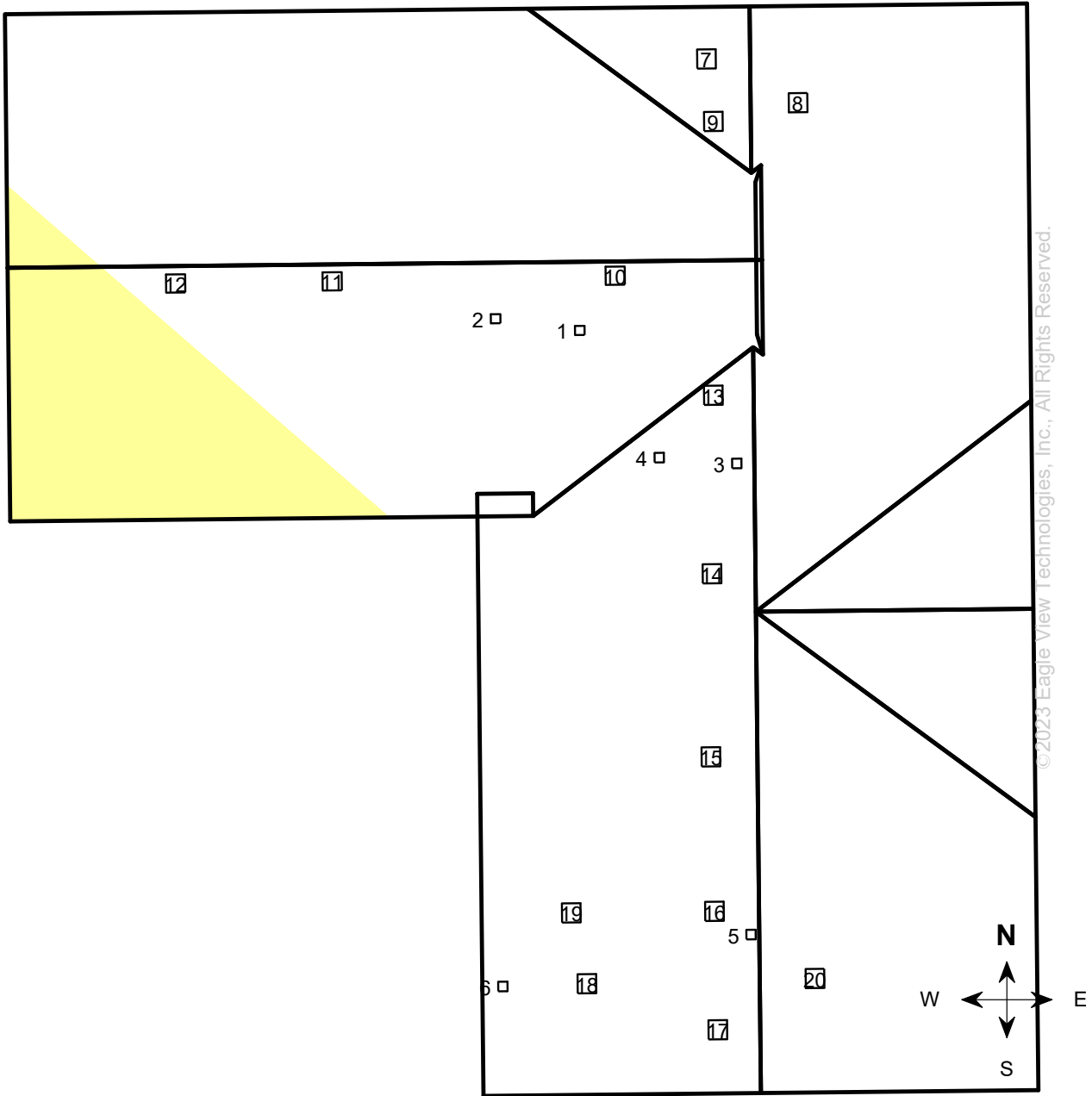
Penetrations are labeled from smallest to largest for easy reference.

Total Penetrations = 20

Total Penetrations Area = 16 sq ft

Total Penetrations Perimeter = 68 ft

Total Roof Area Less Penetrations = 2,378 sq ft



©2023 Eagle View Technologies, Inc., All Rights Reserved.



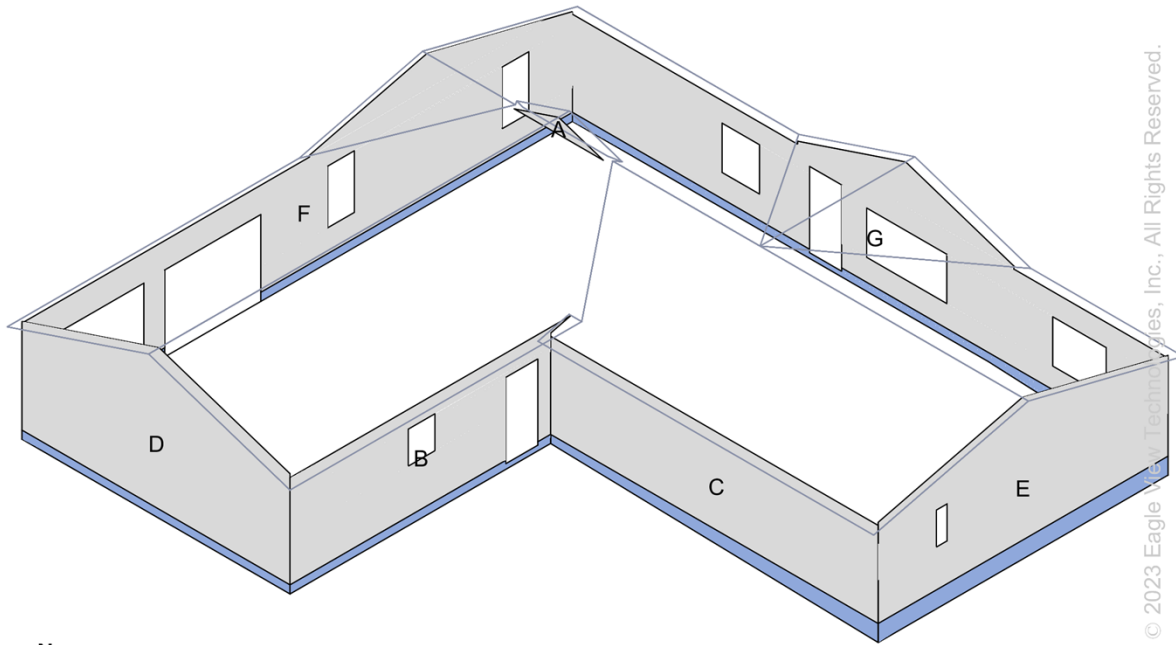
Report: 55398554

© 2008-2023 Eagle View Technologies, Inc. and Pictometry International Corp. – All Rights Reserved – Covered by one or more of U.S. Patent Nos. 8,078,436; 8,145,578; 8,170,840; 8,209,152; 8,515,125; 8,825,454; 9,135,737; 8,670,961; 9,514,568; 8,818,770; 8,542,880; 9,244,589; 9,329,749. Other Patents Pending.

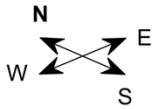
### Wall Area Diagram

Total Wall Area = 1902.6 sq ft, with 7 facets.

Total Wall Area with Windows and Doors = 2171.0 sq ft



© 2023 Eagle View Technologies, Inc., All Rights Reserved.



● Siding  
● Masonry

#### North

| Wall         | Siding Wall Area (ft <sup>2</sup> ) | Masonry Wall Area (ft <sup>2</sup> ) |
|--------------|-------------------------------------|--------------------------------------|
| F            | 342.9                               | 24.8                                 |
| <b>Total</b> | <b>342.9</b>                        | <b>24.8</b>                          |

#### East

| Wall         | Siding Wall Area (ft <sup>2</sup> ) | Masonry Wall Area (ft <sup>2</sup> ) |
|--------------|-------------------------------------|--------------------------------------|
| G            | 398.9                               | 47.2                                 |
| A            | 5.8                                 | 0.0                                  |
| <b>Total</b> | <b>404.7</b>                        | <b>47.2</b>                          |

#### South

| Wall         | Siding Wall Area (ft <sup>2</sup> ) | Masonry Wall Area (ft <sup>2</sup> ) |
|--------------|-------------------------------------|--------------------------------------|
| E            | 265.3                               | 41.8                                 |
| B            | 184.8                               | 17.2                                 |
| <b>Total</b> | <b>450.1</b>                        | <b>59.0</b>                          |

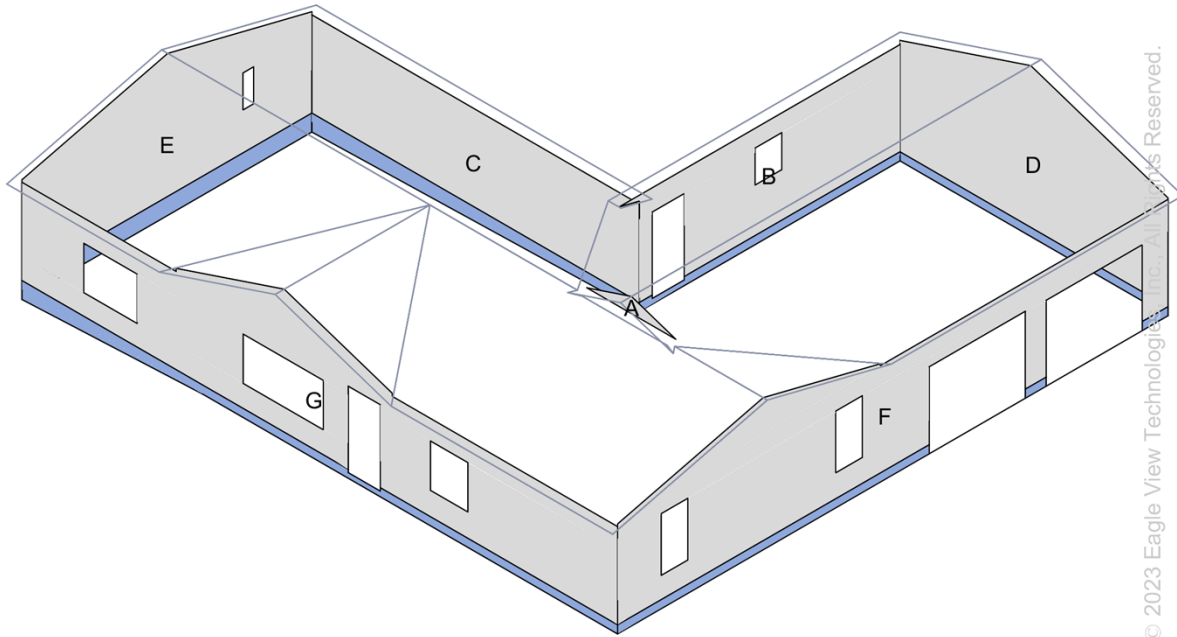
#### West

| Wall         | Siding Wall Area (ft <sup>2</sup> ) | Masonry Wall Area (ft <sup>2</sup> ) |
|--------------|-------------------------------------|--------------------------------------|
| D            | 276.2                               | 18.6                                 |
| C            | 244.1                               | 35.0                                 |
| <b>Total</b> | <b>520.3</b>                        | <b>53.6</b>                          |

**Alternate Wall View**

Total Wall Area = 1902.6 sq ft, with 7 facets.

Total Wall Area with Windows and Doors = 2171.0 sq ft



© 2023 Eagle View Technologies, Inc. All Rights Reserved.



● Siding  
● Masonry

Note: Window & door measurements include trim.

**North**

| Wall         | Siding Wall Area (ft <sup>2</sup> ) | Masonry Wall Area (ft <sup>2</sup> ) |
|--------------|-------------------------------------|--------------------------------------|
| F            | 342.9                               | 24.8                                 |
| <b>Total</b> | <b>342.9</b>                        | <b>24.8</b>                          |

**East**

| Wall         | Siding Wall Area (ft <sup>2</sup> ) | Masonry Wall Area (ft <sup>2</sup> ) |
|--------------|-------------------------------------|--------------------------------------|
| G            | 398.9                               | 47.2                                 |
| A            | 5.8                                 | 0.0                                  |
| <b>Total</b> | <b>404.7</b>                        | <b>47.2</b>                          |

**South**

| Wall         | Siding Wall Area (ft <sup>2</sup> ) | Masonry Wall Area (ft <sup>2</sup> ) |
|--------------|-------------------------------------|--------------------------------------|
| E            | 265.3                               | 41.8                                 |
| B            | 184.8                               | 17.2                                 |
| <b>Total</b> | <b>450.1</b>                        | <b>59.0</b>                          |

**West**

| Wall         | Siding Wall Area (ft <sup>2</sup> ) | Masonry Wall Area (ft <sup>2</sup> ) |
|--------------|-------------------------------------|--------------------------------------|
| D            | 276.2                               | 18.6                                 |
| C            | 244.1                               | 35.0                                 |
| <b>Total</b> | <b>520.3</b>                        | <b>53.6</b>                          |



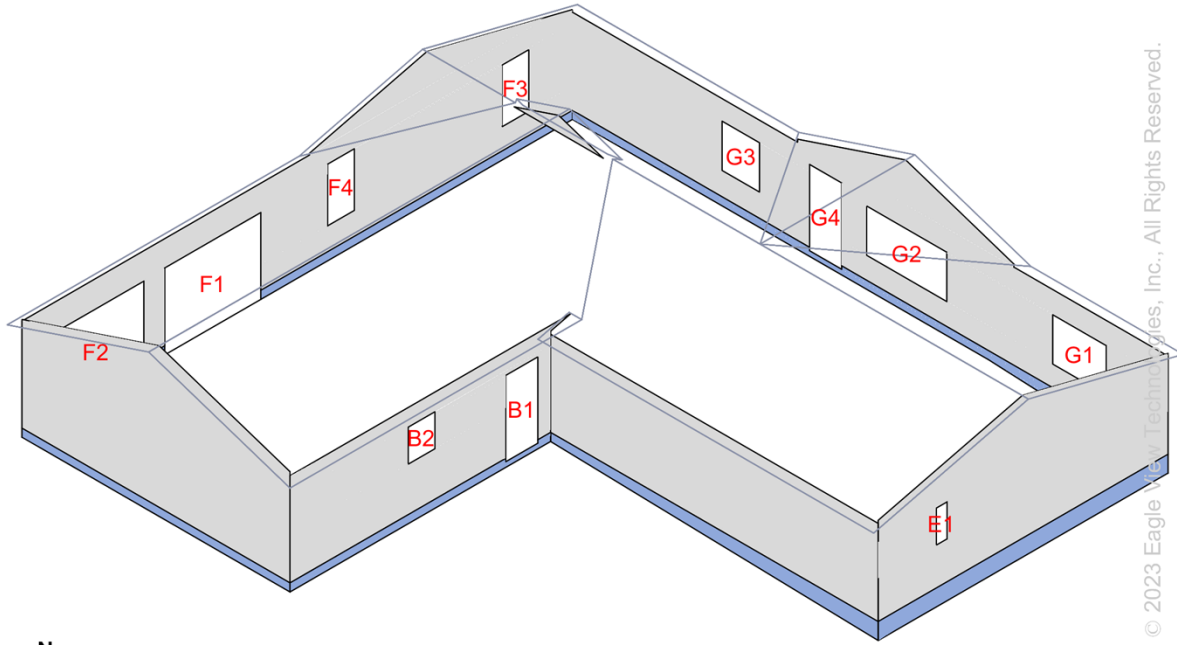
Report: 55398554

© 2008-2023 Eagle View Technologies, Inc. and Pictometry International Corp. - All Rights Reserved - Covered by one or more of U.S. Patent Nos. 8,078,436; 8,145,578; 8,170,840; 8,209,152; 8,515,125; 8,825,454; 9,135,737; 8,670,961; 9,514,568; 8,818,770; 8,542,880; 9,244,589; 9,329,749; 9,599,466. Other Patents Pending.

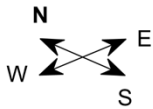
### Window and Door Diagram

Total Window and Door Area = 267.5 sq ft, with 11 windows and doors

Total Window and Door Perimeter = 209.0 ft



© 2023 Eagle View Technologies, Inc., All Rights Reserved.



- Siding
- Masonry

#### North

| Window/Door  | Area (ft <sup>2</sup> ) | Perimeter (ft) | Dimensions W x H (ft) |
|--------------|-------------------------|----------------|-----------------------|
| F1           | 63.4                    | 32.0           | 9.0 x 7.0             |
| F2           | 62.6                    | 32.0           | 9.0 x 7.0             |
| F3           | 12.5                    | 15.0           | 2.5 x 5.0             |
| F4           | 12.5                    | 15.0           | 2.5 x 5.0             |
| <b>Total</b> | <b>151.0</b>            | <b>94.0</b>    | <b>n/a</b>            |

#### East

| Window/Door  | Area (ft <sup>2</sup> ) | Perimeter (ft) | Dimensions W x H (ft) |
|--------------|-------------------------|----------------|-----------------------|
| G1           | 20.0                    | 18.0           | 5.0 x 4.0             |
| G2           | 30.0                    | 23.0           | 7.5 x 4.0             |
| G3           | 14.0                    | 15.0           | 3.5 x 4.0             |
| G4           | 21.0                    | 20.0           | 3.0 x 7.0             |
| <b>Total</b> | <b>85.0</b>             | <b>76.0</b>    | <b>n/a</b>            |

#### South

| Window/Door  | Area (ft <sup>2</sup> ) | Perimeter (ft) | Dimensions W x H (ft) |
|--------------|-------------------------|----------------|-----------------------|
| B1           | 21.0                    | 20.0           | 3.0 x 7.0             |
| B2           | 7.5                     | 11.0           | 2.5 x 3.0             |
| E1           | 3.0                     | 8.0            | 1.0 x 3.0             |
| <b>Total</b> | <b>31.5</b>             | <b>39.0</b>    | <b>n/a</b>            |

#### West

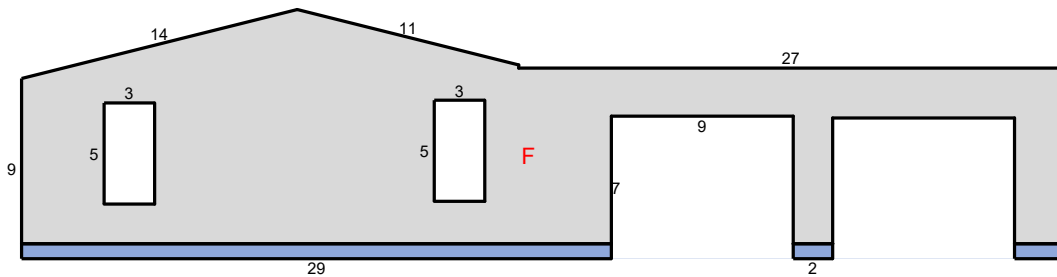
| Window/Door  | Area (ft <sup>2</sup> ) | Perimeter (ft) | Dimensions W x H (ft) |
|--------------|-------------------------|----------------|-----------------------|
| <b>Total</b> | <b>0</b>                | <b>0</b>       | <b>0 x 0</b>          |



Report: 55398554

© 2008-2023 Eagle View Technologies, Inc. and Pictometry International Corp. - All Rights Reserved - Covered by one or more of U.S. Patent Nos. 8,078,436; 8,145,578; 8,170,840; 8,209,152; 8,515,125; 8,825,454; 9,135,737; 8,670,961; 9,514,568; 8,818,770; 8,542,880; 9,244,589; 9,329,749; 9,599,466. Other Patents Pending.

### North Elevation Diagram



©2023 Eagle View Technologies, Inc., All Rights Reserved.

- Siding
- Masonry

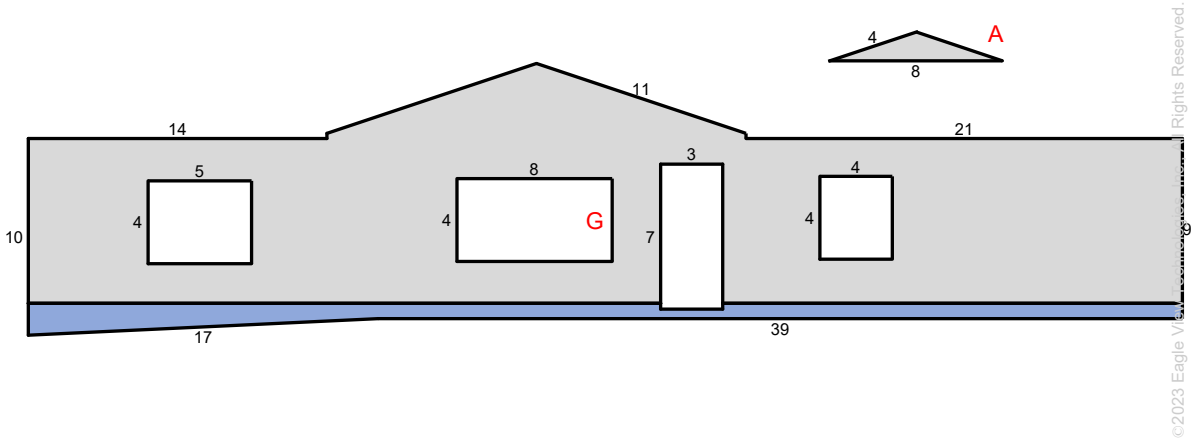
Top of Siding Walls = 52.3 ft  
 Bottom of Siding Wall = 51.5 ft

| Wall         | Siding Wall Area (ft <sup>2</sup> ) | Masonry Wall Area (ft <sup>2</sup> ) | Window & Door Area (ft <sup>2</sup> ) | Window & Door Perimeter (ft) | Window & Door Count |
|--------------|-------------------------------------|--------------------------------------|---------------------------------------|------------------------------|---------------------|
| F            | 342.9                               | 24.8                                 | 151.0                                 | 94.0                         | 4                   |
| <b>Total</b> | <b>342.9</b>                        | <b>24.8</b>                          | <b>151.0</b>                          | <b>94.0</b>                  | <b>4</b>            |

**Note: On-site verification of yellow shaded areas is needed. Details are on the Wall Measurement Summary Page.** This diagram shows segment lengths rounded to the nearest whole number. The window & door and wall area in square feet (rounded to the nearest tenth) is based on the actual (non-rounded) value of each segment length.



### East Elevation Diagram



©2023 Eagle View Technologies, Inc. All Rights Reserved.

- Siding
- Masonry

Top of Siding Walls = 65.7 ft  
 Bottom of Siding Walls = 64.1 ft

| Wall         | Siding Wall Area (ft <sup>2</sup> ) | Masonry Wall Area (ft <sup>2</sup> ) | Window & Door Area (ft <sup>2</sup> ) | Window & Door Perimeter (ft) | Window & Door Count |
|--------------|-------------------------------------|--------------------------------------|---------------------------------------|------------------------------|---------------------|
| G            | 398.9                               | 47.2                                 | 85.0                                  | 76.0                         | 4                   |
| A            | 5.8                                 | 0.0                                  | 0                                     | 0                            | 0                   |
| <b>Total</b> | <b>404.7</b>                        | <b>47.2</b>                          | <b>85.0</b>                           | <b>76.0</b>                  | <b>4</b>            |

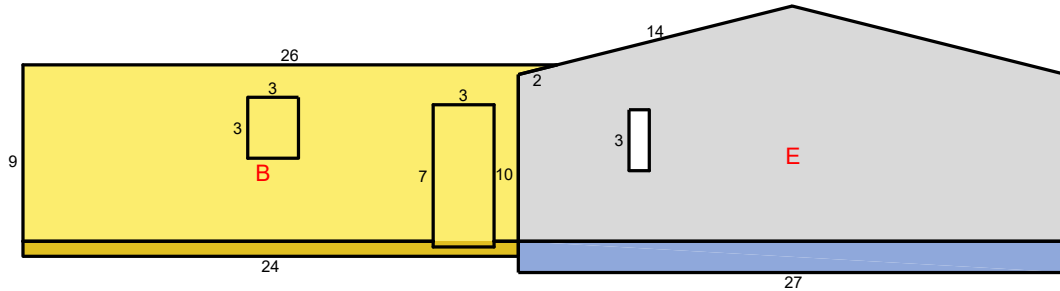
**Note: On-site verification of yellow shaded areas is needed. Details are on the Wall Measurement Summary Page.** This diagram shows segment lengths rounded to the nearest whole number. The window & door and wall area in square feet (rounded to the nearest tenth) is based on the actual (non-rounded) value of each segment length.



Report: 55398554

© 2008-2023 Eagle View Technologies, Inc. and Pictometry International Corp. – All Rights Reserved – Covered by one or more of U.S. Patent Nos. 8,078,436; 8,145,578; 8,170,840; 8,209,152; 8,515,125; 8,825,454; 9,135,737; 8,670,961; 9,514,568; 8,818,770; 8,542,880; 9,244,589; 9,329,749; 9,599,466. Other Patents Pending.

### South Elevation Diagram



© 2023 Eagle View Technologies, Inc., All Rights Reserved.

- Siding
- Masonry

Top of Siding Walls = 55.7 ft  
 Bottom of Siding Walls = 54.8 ft

| Wall         | Siding Wall Area (ft <sup>2</sup> ) | Masonry Wall Area (ft <sup>2</sup> ) | Window & Door Area (ft <sup>2</sup> ) | Window & Door Perimeter (ft) | Window & Door Count |
|--------------|-------------------------------------|--------------------------------------|---------------------------------------|------------------------------|---------------------|
| E            | 265.3                               | 41.8                                 | 3.0                                   | 8.0                          | 1                   |
| B            | 184.8                               | 17.2                                 | 28.5                                  | 31.0                         | 2                   |
| <b>Total</b> | <b>450.1</b>                        | <b>59.0</b>                          | <b>31.5</b>                           | <b>39.0</b>                  | <b>3</b>            |

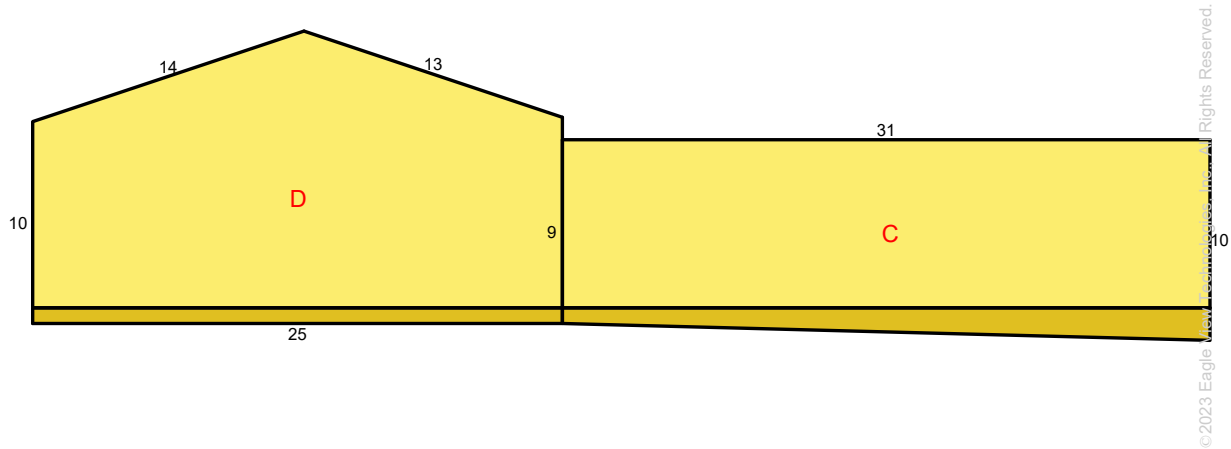
**Note: On-site verification of yellow shaded areas is needed. Details are on the Wall Measurement Summary Page.** This diagram shows segment lengths rounded to the nearest whole number. The window & door and wall area in square feet (rounded to the nearest tenth) is based on the actual (non-rounded) value of each segment length.



Report: 55398554

© 2008-2023 Eagle View Technologies, Inc. and Pictometry International Corp. – All Rights Reserved – Covered by one or more of U.S. Patent Nos. 8,078,436; 8,145,578; 8,170,840; 8,209,152; 8,515,125; 8,825,454; 9,135,737; 8,670,961; 9,514,568; 8,818,770; 8,542,880; 9,244,589; 9,329,749; 9,599,466. Other Patents Pending.

### West Elevation Diagram



- Siding
- Masonry

Top of Siding Walls = 57.1 ft  
 Bottom of Siding Walls = 55.8 ft

| Wall         | Siding Wall Area (ft <sup>2</sup> ) | Masonry Wall Area (ft <sup>2</sup> ) | Window & Door Area (ft <sup>2</sup> ) | Window & Door Perimeter (ft) | Window & Door Count |
|--------------|-------------------------------------|--------------------------------------|---------------------------------------|------------------------------|---------------------|
| D            | 276.2                               | 18.6                                 | 0                                     | 0                            | 0                   |
| C            | 244.1                               | 35.0                                 | 0                                     | 0                            | 0                   |
| <b>Total</b> | <b>520.3</b>                        | <b>53.6</b>                          | <b>0.0</b>                            | <b>0.0</b>                   | <b>0</b>            |

**Note: On-site verification of yellow shaded areas is needed. Details are on the Wall Measurement Summary Page.** This diagram shows segment lengths rounded to the nearest whole number. The window & door and wall area in square feet (rounded to the nearest tenth) is based on the actual (non-rounded) value of each segment length.



Report: 55398554

© 2008-2023 Eagle View Technologies, Inc. and Pictometry International Corp. – All Rights Reserved – Covered by one or more of U.S. Patent Nos. 8,078,436; 8,145,578; 8,170,840; 8,209,152; 8,515,125; 8,825,454; 9,135,737; 8,670,961; 9,514,568; 8,818,770; 8,542,880; 9,244,589; 9,329,749; 9,599,466. Other Patents Pending.



## Report Summary

Below is a measurement summary using the values presented in this report.

### All Structures

#### Areas per Pitch

| Roof Pitches | 3/12   | 4/12   |
|--------------|--------|--------|
| Area (sq ft) | 1242.3 | 1151.2 |
| % of Roof    | 51.9%  | 48.1%  |

**Disclaimer:** The table above lists each pitch on this roof and the total area and percent (both rounded) of the roof with that pitch. With Whole Home, only the predominant pitch may be noted due to resolution of photo. With Whole Home, EagleView recommends field verifying yellow-shaded sections and pitch utilizing the Facet Area Based Upon Pitch Table below.

#### Structure Complexity

Simple

Normal

Complex

#### Waste Calculation

NOTE: This waste calculation table is for asphalt shingle roofing applications. All values in table below only include roof areas of 3/12 pitch or greater. For total measurements of all pitches, please refer to the **Lengths, Areas, and Pitches** section below.

| Waste %      | 0%              | 5%    | 8%    | 10%              | 12%   | 15%   | 20%   | 25%   | 30%   |
|--------------|-----------------|-------|-------|------------------|-------|-------|-------|-------|-------|
| Area (Sq ft) | <b>2394</b>     | 2514  | 2586  | <b>2634</b>      | 2682  | 2754  | 2873  | 2993  | 3113  |
| Squares *    | <b>24.00</b>    | 25.33 | 26.00 | <b>26.66</b>     | 27.00 | 27.66 | 29.00 | 30.00 | 31.33 |
|              | <b>Measured</b> |       |       | <b>Suggested</b> |       |       |       |       |       |

\* Squares are rounded up to the 1/3 of a square

Additional materials needed for ridge, hip, and starter lengths are not included in the above table. The provided suggested waste factor is intended to serve as a guide—actual waste percentages may differ based upon several variables that EagleView does not control. These waste factor variables include, but are not limited to, individual installation techniques, crew experiences, asphalt shingle material subtleties, and potential salvage from the site. Individual results may vary from the suggested waste factor that EagleView has provided. The suggested waste is not to replace or substitute for experience or judgment as to any given replacement or repair work.

### Report Comments

**Due to obstructions in available images of this property, please verify measurements on portion of structure highlighted in yellow.**

| Penetrations   | 1-6 | 7-20 |  |  |  |  |  |  |  |
|----------------|-----|------|--|--|--|--|--|--|--|
| Area (sq ft)   | 0.2 | 1    |  |  |  |  |  |  |  |
| Perimeter (ft) | 2   | 4    |  |  |  |  |  |  |  |

Any measured penetration smaller than 3x3 feet may need field verification. Accuracy is not guaranteed. The total penetration area is not subtracted from the total roof area.

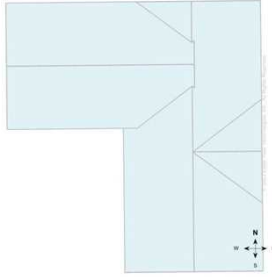
† Rakes are defined as roof edges that are sloped (not level).

‡ Eaves are defined as roof edges that are not sloped and level.



Report: 55398554

© 2008-2023 Eagle View Technologies, Inc. and Pictometry International Corp. – All Rights Reserved – Covered by one or more of U.S. Patent Nos. 8,078,436; 8,145,578; 8,170,840; 8,209,152; 8,515,125; 8,825,454; 9,135,737; 8,670,961; 9,514,568; 8,818,770; 8,542,880; 9,244,589; 9,329,749. Other Patents Pending.

**All Structures Totals**

Total Roof Facets = 8  
Total Penetrations = 20

**Lengths, Areas and Pitches**

Ridges = 102 ft (5 Ridges)  
Hips = 0 ft (0 Hips).  
Valleys = 68 ft (6 Valleys)  
Rakes<sup>+</sup> = 119 ft (10 Rakes)  
Eaves/Starter<sup>+</sup> = 122 ft (5 Eaves)  
Drip Edge (Eaves + Rakes) = 241 ft (15 Lengths)  
Parapet Walls = 0 (0 Lengths).  
Flashing = 10 ft (2 Lengths)  
Step flashing = 5 ft (3 Lengths)  
Total Penetrations Area = 16 sq ft  
Total Roof Area Less Penetrations = 2,378 sq ft  
Total Penetrations Perimeter = 68 ft  
Predominant Pitch = 3/12  
**Total Area (All Pitches) = 2,394 sq ft**

**Property Location**

Longitude = -103.6571754  
Latitude = 40.2594277

**Notes**

This was ordered as a residential property. There were no changes to the structure in the past four years.

**Online Maps**

Online map of property

[http://maps.google.com/maps?f=g&source=s\\_q&hl=en&geocode=&q=69+Jennifer+Cir,Brush,CO,80723](http://maps.google.com/maps?f=g&source=s_q&hl=en&geocode=&q=69+Jennifer+Cir,Brush,CO,80723)

Directions from Eagleview Technologies to this property

[http://maps.google.com/maps?f=d&source=s\\_d&saddr=Address+1,Alabama,AL,35004&daddr=69+Jennifer+Cir,Brush,CO,80723](http://maps.google.com/maps?f=d&source=s_d&saddr=Address+1,Alabama,AL,35004&daddr=69+Jennifer+Cir,Brush,CO,80723)

**Disclaimer:** This report was produced using EagleView Extended Coverage Technology. Due to a variety of reasons including, but not limited to: tree coverage, poor images, low photo resolution or other blockages; this report DOES NOT offer an accuracy guarantee. EagleView recommends that anyone using this report field verify the yellow-shaded sections.

## Wall Measurement Summary

Below is a measurement summary using the values presented in this report.

### Wall Area Waste Calculations

#### Siding Material

| Waste %                 | 0%    | 10%   | 11%   | 12%   | 13%   | 14%   | 15%   | 20%   |
|-------------------------|-------|-------|-------|-------|-------|-------|-------|-------|
| Area (ft <sup>2</sup> ) | 1,718 | 1,890 | 1,907 | 1,924 | 1,941 | 1,959 | 1,976 | 2,062 |
| Squares                 | 17.2  | 18.9  | 19.1  | 19.2  | 19.4  | 19.6  | 19.8  | 20.6  |

#### Masonry Material

| Waste %                 | 0%  | 10% | 11% | 12% | 13% | 14% | 15% | 20% |
|-------------------------|-----|-----|-----|-----|-----|-----|-----|-----|
| Area (ft <sup>2</sup> ) | 185 | 203 | 205 | 207 | 209 | 210 | 212 | 222 |
| Squares                 | 1.8 | 2   | 2   | 2.1 | 2.1 | 2.1 | 2.1 | 2.2 |

The tables above show the total wall area excluding windows and doors, based upon different waste percentages. The waste factor is subject to the complexity of the structure, image quality, siding techniques and your experience. Please consider this when calculating appropriate waste percentages. Note that only the wall area is included in these waste calculations. Accessories may require additional material.

## Total Lengths & Areas

### Wall Area excluding Windows & Doors

Total = 1902.6 ft<sup>2</sup>

Siding = 1718.0 ft<sup>2</sup>

Masonry = 184.6 ft<sup>2</sup>

### General Totals

Wall Facets = 7

Windows & Doors = 11

Window and Door Area = 267.5 ft<sup>2</sup>

Window & Door Perimeter = 209.0 ft

Fascia (Eaves + Rakes) = 241

Top of Siding Walls = 230.8 ft

Bottom of Siding Walls = 226.2 ft

### Property Location

Longitude = -103.6571754

Latitude = 40.2594277

### Corner Totals

|                      | Siding to Siding | Masonry to Masonry | Siding to Masonry | Total          |
|----------------------|------------------|--------------------|-------------------|----------------|
| Inside Corners       | 8.2 ft           | 0.7 ft             | 0.0 ft            | <b>8.9 ft</b>  |
| Outside Corners      | 42.4 ft          | 5.1 ft             | 0.0 ft            | <b>47.5 ft</b> |
| Inside Corners > 90  | 0.0 ft           | 0.0 ft             | 0.0 ft            | <b>0.0 ft</b>  |
| Outside Corners > 90 | 0.0 ft           | 0.0 ft             | 0.0 ft            | <b>0.0 ft</b>  |

### Notes

There were no changes to the structure in the past four years.

### Report Comments

Due to obstructions in available images of this property, please verify measurements on portion of structure highlighted in yellow.

Wall measurements should be field verified to confirm accuracy. Wall areas assume that flat soffits exist at the eaves. If sloped soffits are present, wall height and wall area measurements will likely be off.



Report: 55398554

© 2008-2023 Eagle View Technologies, Inc. and Pictometry International Corp. - All Rights Reserved - Covered by one or more of U.S. Patent Nos. 8,078,436; 8,145,578; 8,170,840; 8,209,152; 8,515,125; 8,825,454; 9,135,737; 8,670,961; 9,514,568; 8,818,770; 8,542,880; 9,244,589; 9,329,749. Other Patents Pending.

**Facet Area (sq ft) Based Upon Pitch**

The area for each facet appears in the column under the appropriate pitch.

| Facet | Pitch(inches per foot) |       |       |       |       |       |       |       |       |       |       |
|-------|------------------------|-------|-------|-------|-------|-------|-------|-------|-------|-------|-------|
|       | 0                      | 2     | 4     | 6     | 8     | 10    | 12    | 14    | 16    | 18    | 20    |
| A     | 50.3                   | 51.0  | 53.0  | 56.2  | 60.5  | 65.5  | 71.1  | 77.3  | 83.8  | 90.7  | 97.8  |
| B     | 78.8                   | 79.9  | 83.1  | 88.1  | 94.7  | 102.6 | 111.4 | 121.1 | 131.3 | 142.1 | 153.2 |
| C     | 78.8                   | 79.9  | 83.1  | 88.1  | 94.7  | 102.6 | 111.4 | 121.1 | 131.3 | 142.1 | 153.2 |
| D     | 285.5                  | 289.4 | 300.9 | 319.2 | 343.1 | 371.6 | 403.8 | 438.7 | 475.8 | 514.7 | 554.9 |
| E     | 377.2                  | 382.4 | 397.6 | 421.7 | 453.3 | 491.0 | 533.4 | 579.6 | 628.7 | 680.0 | 733.1 |
| F     | 467.2                  | 473.6 | 492.5 | 522.3 | 561.5 | 608.2 | 660.7 | 717.9 | 778.7 | 842.3 | 908.1 |
| G     | 467.2                  | 473.6 | 492.5 | 522.3 | 561.5 | 608.2 | 660.7 | 717.9 | 778.7 | 842.3 | 908.1 |
| H     | 492.3                  | 499.1 | 518.9 | 550.4 | 591.7 | 640.8 | 696.2 | 756.5 | 820.5 | 887.5 | 956.9 |
| Total | 2297                   | 2329  | 2422  | 2568  | 2761  | 2990  | 3249  | 3530  | 3829  | 4142  | 4465  |

Each value is rounded to the nearest square foot. The totals are based on the unrounded values.

**Disclaimer:** This report was produced using EagleView Extended Coverage Technology. Due to a variety of reasons including, but not limited to: tree coverage, poor images, low photo resolution or other blockages; this report DOES NOT offer an accuracy guarantee. EagleView recommends that anyone using this report field verify the yellow-shaded sections.

