

# Precise Aerial Roof Measurement Report

Prepared for you by Eagleview



123 Main St. City, ST 12345



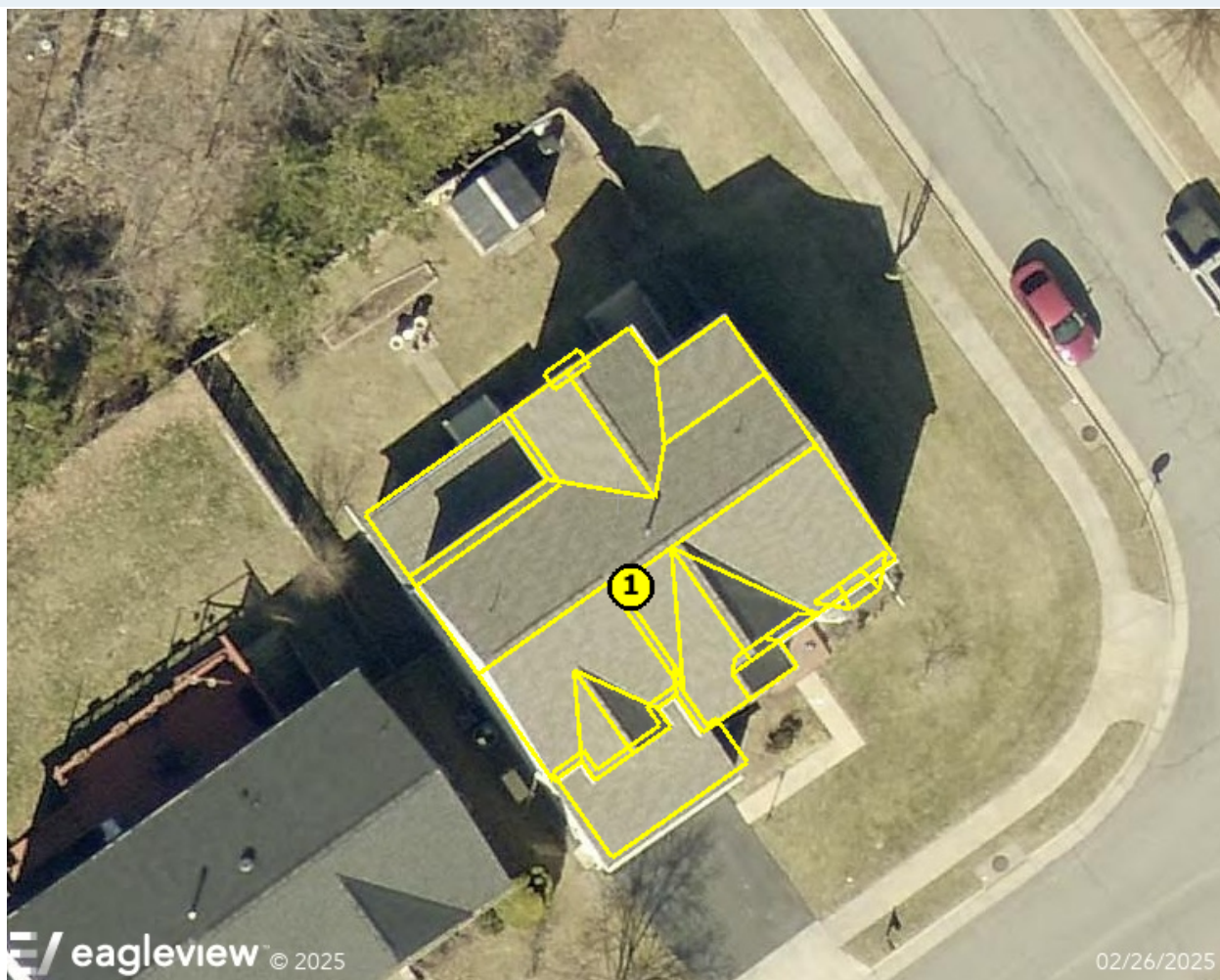
Eagleview  
10900 NE 4th St Suite 800  
Bellevue, WA 98004

John Doe  
Phone #: 555-555-5555  
email: [info@eagleview.com](mailto:info@eagleview.com)

123 Main St. City, ST 12345

Report: 65659918

## REPORT DETAILS



Roof	Total Area*	Pitch				# Facets	Suggested Waste Factor
		7/12	12/12	4/12	2/12		
#1	31.7 squares	62%	16%	12%	8%	19	13%

\*Does NOT include waste

Measurements provided by [www.eagleview.com](http://www.eagleview.com)

Note: Suggested waste factor should only be applied to asphalt shingled roof areas that are above a 3/12 pitch. To learn more, please visit this [knowledge base article](#).  
If there are more than four pitches, see table in appendix.


Learn more at [www.eagleview.com/Guarantee.aspx](http://www.eagleview.com/Guarantee.aspx)

## Upgrade your report!

Ready to order materials? Simply upgrade to our best selling report, **Premium Roof**. The price of your Bid Perfect report will be deducted from your upgrade.

- 3D Roof Diagrams
- Waste Calculation Table
- Square Footage Pitch Table
- Length Diagram
- Notes Diagram
- Report Summary
- Area Diagram
- Pitch Diagram

[Upgrade Now](#)

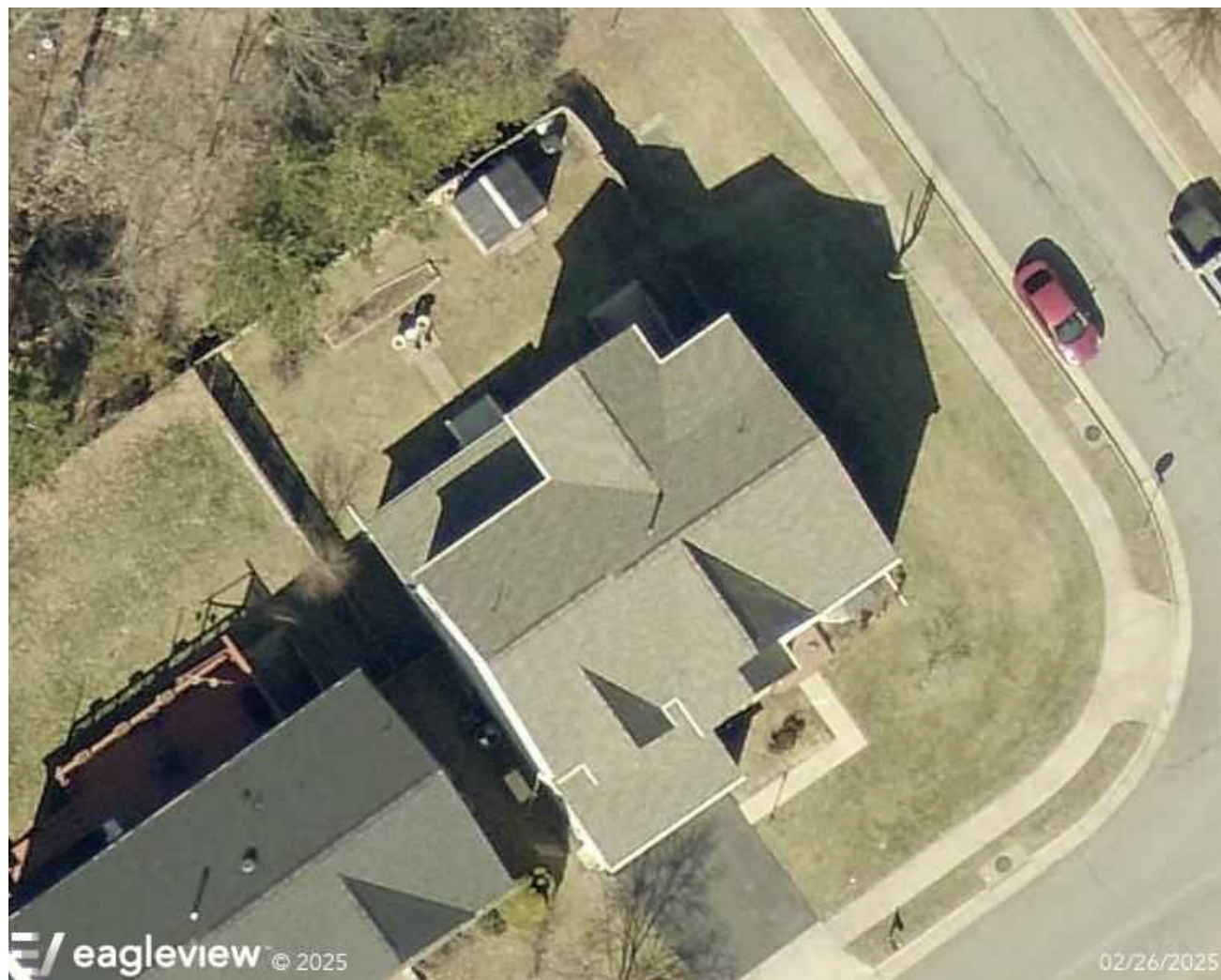


123 Main St. City, ST 12345

Report: 65659918

**IMAGES**

The following aerial images show different angles of this structure for your reference.

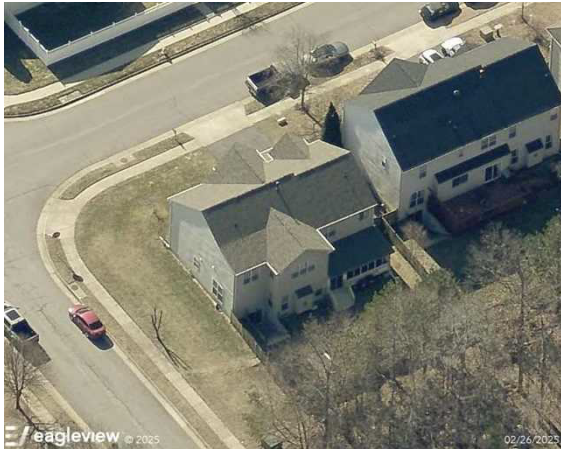


123 Main St. City, ST 12345

Report: 65659918

**IMAGES**

The following aerial images show different angles of this structure for your reference.



North View



South View



East View



West View



123 Main St. City, ST 12345

Report: 65659918

## APPENDIX

Roof	Total Area*	Pitch						# Facets
		7/12	12/12	4/12	2/12	10/12	8/12	
		62%	16%	12%	8%	<1%	<1%	
		19.5 SQ	5.2 SQ	3.9 SQ	2.7 SQ	0.2 SQ	0.2 SQ	
#1	31.7 squares							19

Measurements provided by [www.eagleview.com](http://www.eagleview.com)

\*Does NOT include waste

☐ Low Slope☐ Steep Slope